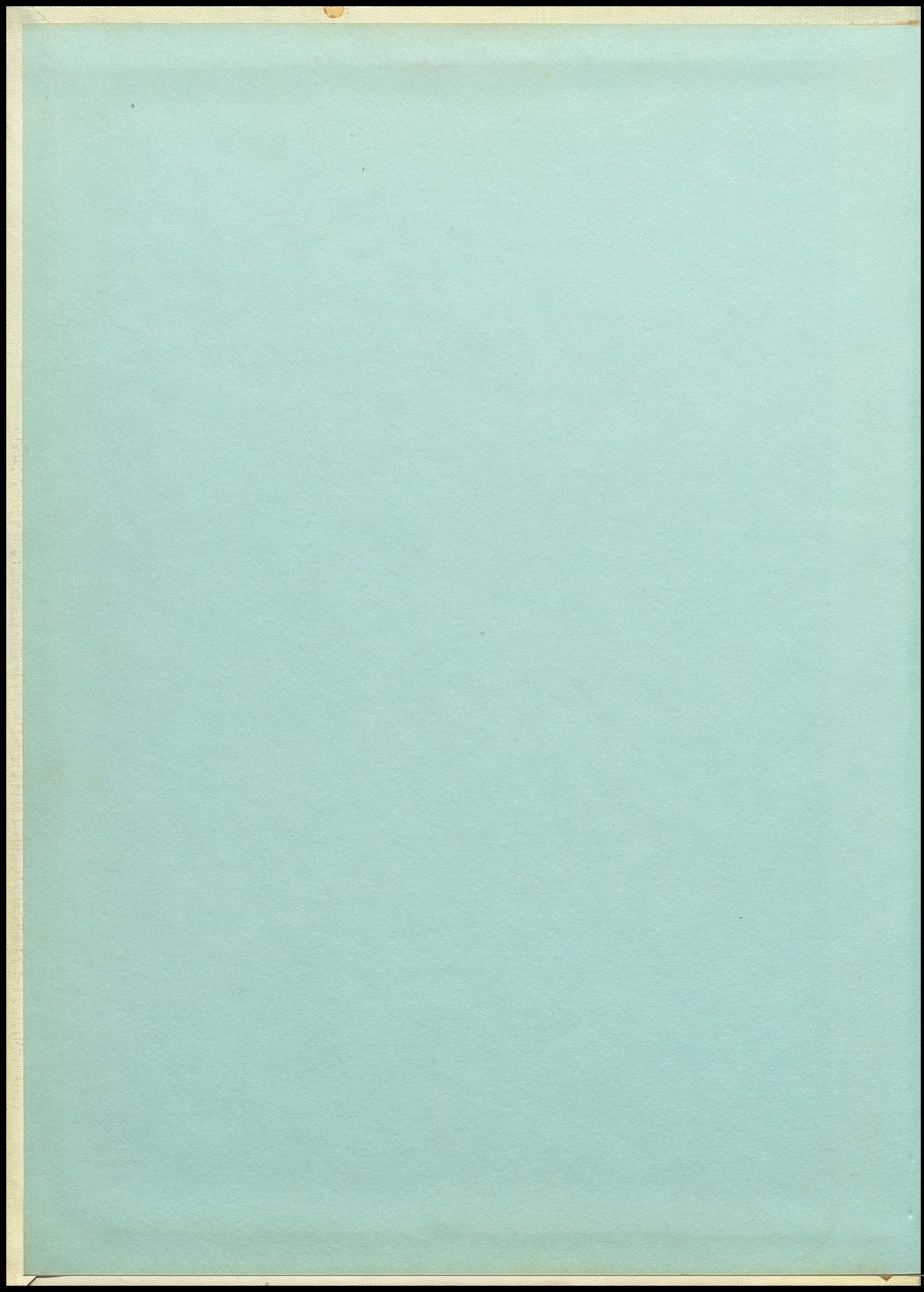
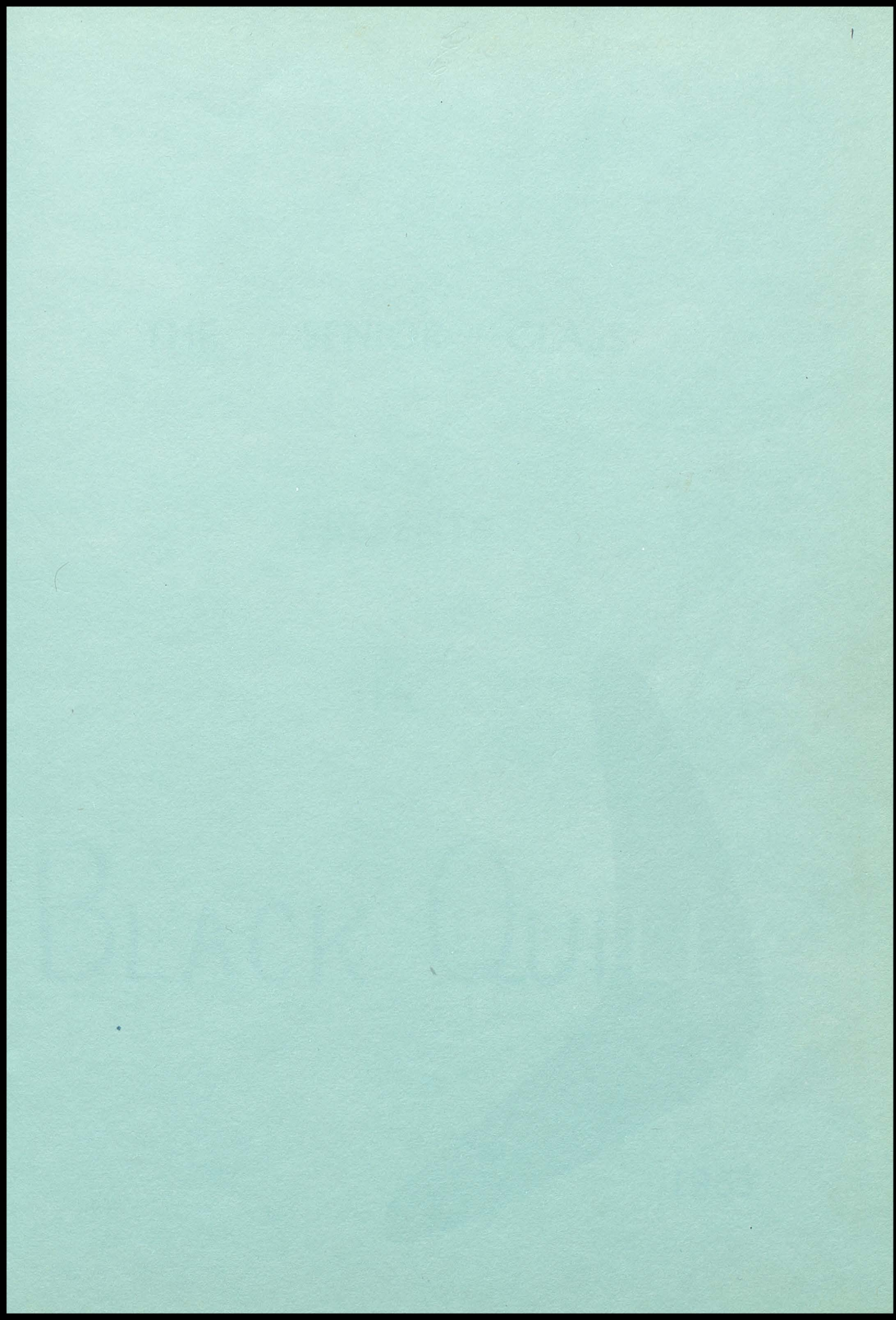


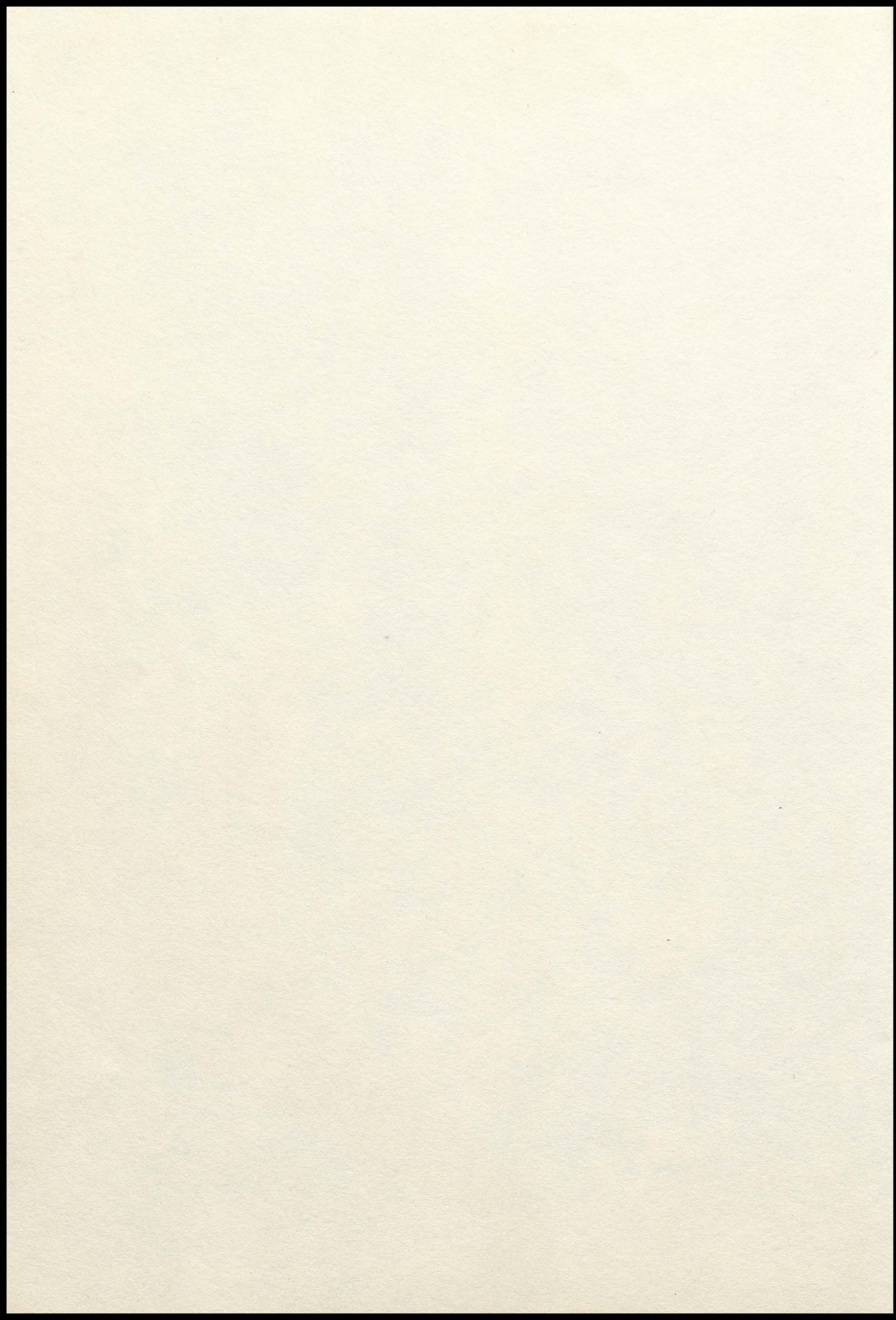


**1963**

**BLACK QUILL**







THE SENIOR CLASS

PRESENTS

THE

BLACK QUILL



1963



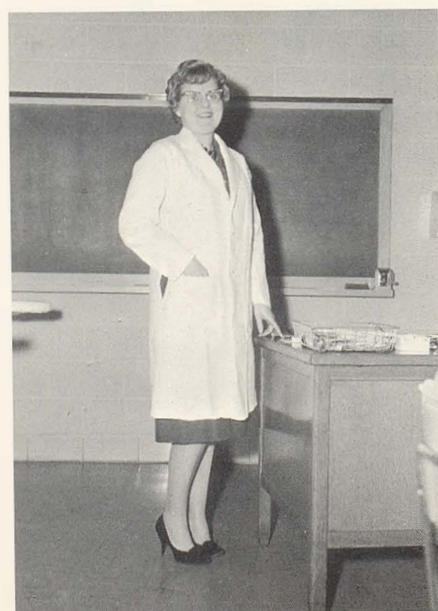
Mrs. Gerner has been our home economics teacher since 1942, after graduating from the University of North Dakota where she was a member of Pi Lambda Theta and Phi Upsilon Omicron. She has taken graduate work at the University of Iowa at Ames.

Through her guidance and leadership she has created enthusiasm and instilled an interest in her students so that many have gone into the home economics field. The home economics department has increased in the number taking the course so that it became necessary to employ a part-time teacher to assist Mrs. Gerner with some of the classes. This allows a greater number of girls to enjoy taking home ec.

She has organized and has been advisor for the Ushers Club and Future Homemakers of America. She was the advisor of the prom for seventeen years, and of many other junior and senior activities.

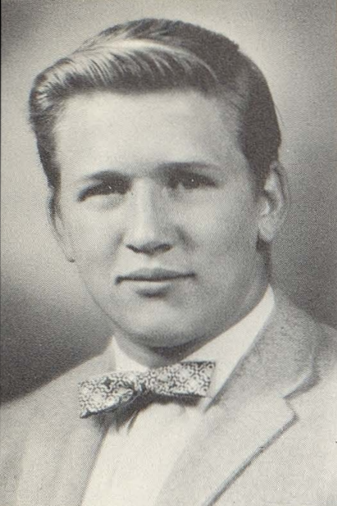
We are very fortunate to have Mrs. Gerner as a member of our school and community. We the Senior Class of 1963 are privileged to honor her at this time.

## DEDICATION



SENIORS





WILLIAM CHARLES AURAND  
"Willy"

"I have survived."

FFA 1

WAYNE HOWARD BECK  
"Wayne"

"Worthy to assume  
responsibility and able  
to carry the burden."

Band 1,2  
Pep Band 1,2  
Chorus 2,3,4,  
Boys' Quartet 2,3,4  
Mixed Ensemble 2,3,4  
Operetta Cast 1,2  
Jr. Class Play  
Declamation 1,2,3,4  
FFA 1,2,3,4  
FTA 2,3,4  
Ushers Club 3,4  
Boys' State 3  
National Honor Society  
Class President 1,3,4  
Black Quill  
Blackduckling 1,3,4  
Booster 1,2,3,4



EILEEN LILA BEIER  
"Leen"

"I'm not one of  
those who believe in  
love at first sight,  
but I do believe in  
taking a second look."

Chorus 3,4  
Jr. Class Play  
FHA 2,3,4  
Ushers Club 3,4  
GAA 2,3  
Pep Club 1  
Princess Candidate 1  
Booster 1,4  
Black Quill

MELBA VIENNA BEIGHLY  
"Melba"

"The characters she  
creates with her pencil  
tips show the quality  
of her workmanship."

Chorus 2,3  
Mixed Ensemble 3  
Triple Trio 2  
Trio 1,2,3  
Art Club 1  
Booster 3,4  
(Art Editor)  
Black Quill



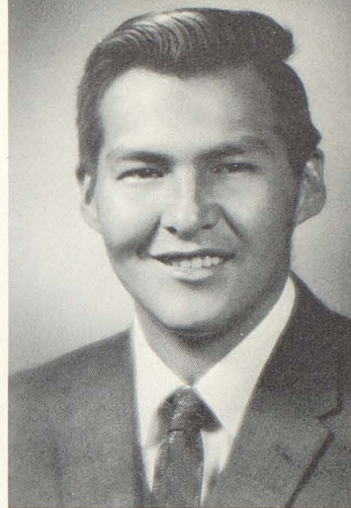




ALVIN ROBERT BOYD  
"Sonny"

"Easy come, easy go,  
and enjoy yourself in  
the meantime."

Chorus 2,3,4  
Jr. Class Play  
Student Council 3  
Black Quill  
Lettermens Club 3,4  
Basketball 1,2,3  
Football 1  
Baseball 1,3,4  
Track 2,3,4



MARILYNN FAYE BOLDAN  
"Marilynn"

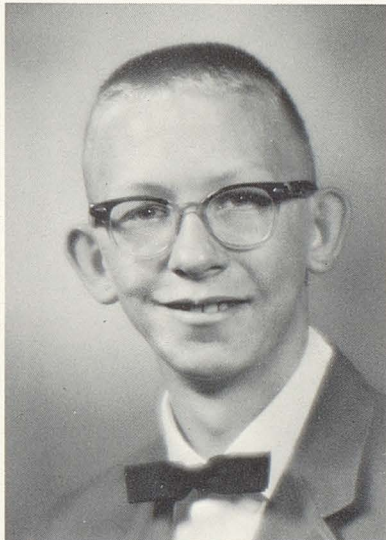
"Laugh every time  
you feel tickled and  
laugh once in a while  
anyway."

Chorus 3  
GAA 2,3,4  
FHA 2,3,4  
Librarians Club 1,2,3,4  
Glee Club 1

LAWRENCE KOLER BODIEN  
"Laurie"

"I hope to succeed  
in the end."

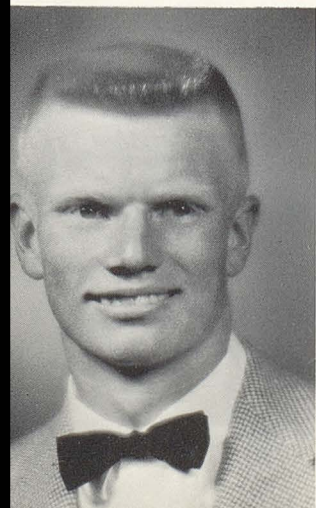
Band 1,2,3,4  
Cornet Quartet 2,3  
Chorus 2,3,4  
FFA 1,2,3,4  
Jr. Class Play



WILLIAM BENSON  
"Bill"

"Sure, I'm proud to  
be tall, anyone can be  
short."

FFA 1,2,3,4  
Track 3,4





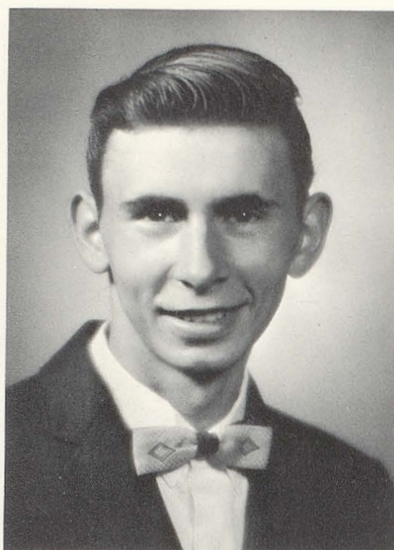
WILLIAM WALTER BROOKS  
"Bill"

"Work doesn't scare me.... I can lie right down beside it and go to sleep."

NORMAN JERRY BUCHER  
"Norman"

"There must be a lot of energy in me 'cuz none's ever come out."

FFA 1,2,3,4



MURIEL JEAN CHARWOOD  
"Muriel"

"A smile as soft as the summer breeze."

FHA 4  
Librarians Club 3  
GAA 4



TED A. CORNE  
"Ted"

"I suppose school is a blessing, but I'll be happy when I'm less blessed."

Basketball 2,3  
Football 2,3  
Track 2  
Homecoming Candidate 4





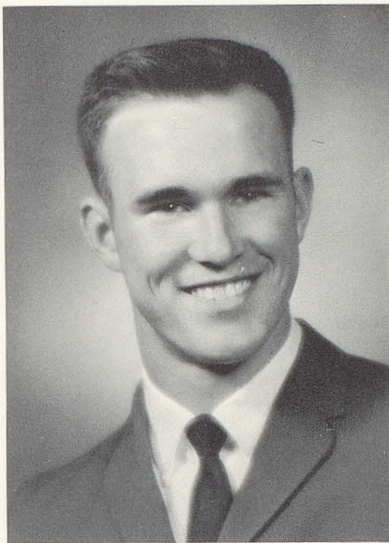
BONNIE JEANNE EMERSON  
"Bonny"

"Play and I'll play  
with; study and I'll  
play alone."



TERRANCE MATTHEW COSTELLO  
"Terry"

"I'm not arguing,  
I'm telling you."



Chorus 2,3,4  
Boys' Quartet 4  
Operetta Cast 1,2  
Jr. Class Play  
Declamation 4  
FTA 4  
FFA 1  
Football 3,4  
Track 1,3,4  
Basketball 1,2  
Lettermens Club 3,4  
Class Vice President 3  
Black Quill  
Booster 4

LEROY RAYMOND DAVIDSON  
"Roy"

"You can tell the  
kind of wheels he has  
in his head by the  
"spokes" that come out  
of his mouth."

Grand Rapids:  
Ski Club 2  
Annual 1,2  
(Art Editor)

Blackduck:  
FFA 4

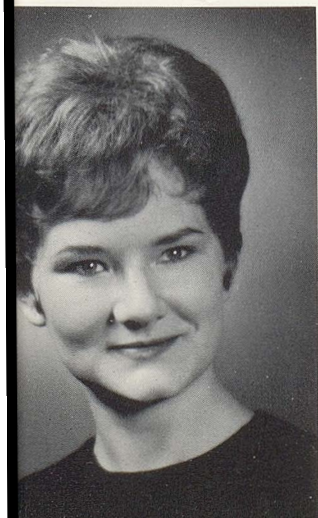


CECILEE ANN CROSBY  
"Cec"

"Men may come and  
men may go, but I go on  
forever."

Band 2,3  
Pep Band 3  
Marching Band 2,3  
Chorus 2,3,4  
Mixed Ensemble 4  
Triple Trio 2  
Woodwind Ensemble 3  
Operetta 1,2  
Jr. Class Play

FHA 2,3,4  
GAA 2,3  
Art Club 1  
Student Council 3,4  
(Secretary 3,  
President 4)  
Class President 2  
Class Treasurer 3  
Class Vice President 4  
Carnival Queen 3  
Black Quill  
Blackduckling 4  
Booster 1,2,3,4





JOYCE ARLENE ERICKSON  
"Joyce"

"A blush is beautiful, but often inconvenient."

- Band 2,3,4
- Chorus 2,4
- Pep Band 3,4
- Librarians Club 3
- FHA 2,4



LINDA JEAN FERIANCEK  
"Lyn"

"A little wheel in high gear."

- Librarians Club 3,4
- FHA 3,4
- GAA 4



PHYLLIS EILEEN EVANS  
"Phyl"

"Her ways are ways of pleasantness and her paths are paths of peace."

- Band 1,2,3,4
- Pep Band 1,3,4
- Woodwind Ensemble 3
- Chorus 2,4
- Jr. Class Play
- Declamation 1,2,3,4
- FSA 3
- FHA 2,3,4
- FTA 2,3,4  
(Secretary 3,  
Presidnet 4)
- Black Quill
- Blackduckling 3,4
- Booster 4

PEGGY LEE FOXX  
"Pegg"

"Tomorrow's life is too late; live today."

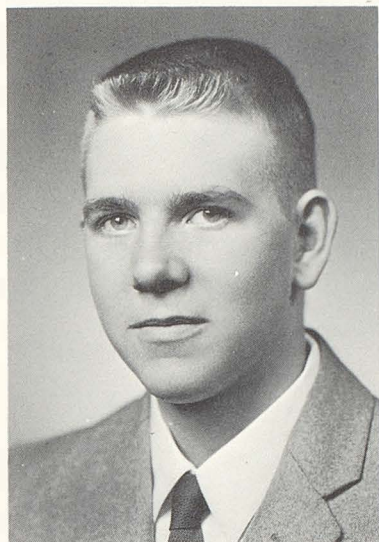
- Librarians Club 3
- GAA 3
- FHA 2,3



REYNOLD DONALD GUSTAFSON  
"Gus"

"Good humor makes  
all things tolerable."

Band 1,2,3,4  
Chorus 2,3,4  
Jr. Class Play  
FFA 1,4  
Ushers Club 3,4  
Basketball 1,2,3,4  
Football 1,2  
Lettermens Club 3,4  
Black Quill



DONALD RAY GUSTAFSON  
"Pete"

"Silence is one of  
the great arts of con-  
versation."

FFA 1,2,3,4

JUDITH KAYE GRIPP  
"Judi"

"There's mischief in  
the best of girls."

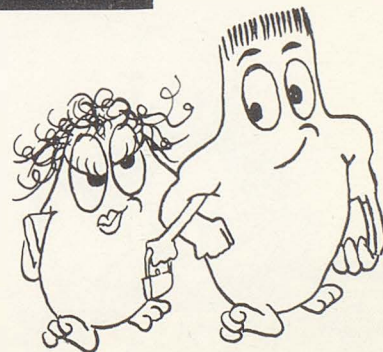
FHA 3,4  
Ushers Club 3,4  
Librarians Club 3,4  
Homecoming Candidate 2



REBECCA LYNNE GRAHAM  
"Becky"

"It is the men that  
cause the women to  
dislike each other."

Band 1,2,3  
Pep Band 1,2,3  
Marching Band 1,2,3  
Chorus 2  
Jr. Class Play  
One Act Play 3  
Operetta 1  
Librarians Club 2,4  
GAA 2  
FHA 2  
Black Quill  
Blackduckling 1,2,3,4  
(Editor 4)  
Booster 1,2,3,4

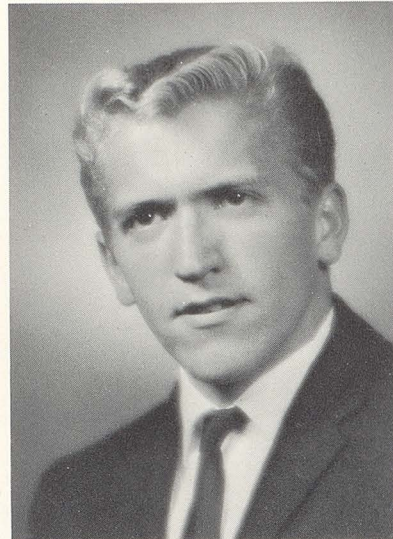




MARIAN CAROLINE HAIBY  
"Mari"

"If silence is golden, then she is surely rich."

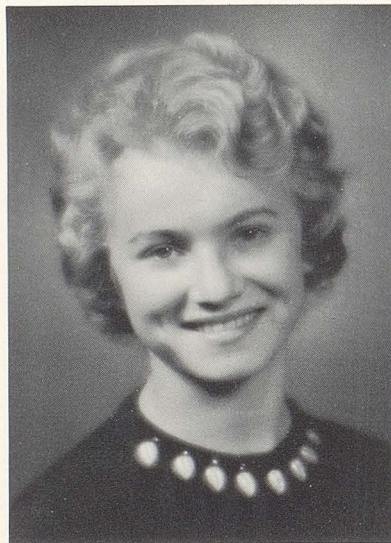
Band 1,2,3  
FHA 2,3,4  
Art Club 1  
Librarians Club 1  
GAA 1



KERRY DONALD HICKS  
"Kerry"

"Everyone is crazy but you and me, and sometimes I suspect you a little."

FFA 1,2,3,4  
Jr. Class Play



CAROLYN MARCELLA HUEWE  
"Carol"

"She's tiny, but so is a stick of dynamite."

Librarians Club 3



SHIRLEY RUTH HUFFSTUTLER  
"Shirley"

"A southern belle in our town, Shirley has a dixie drawl that's known by all."

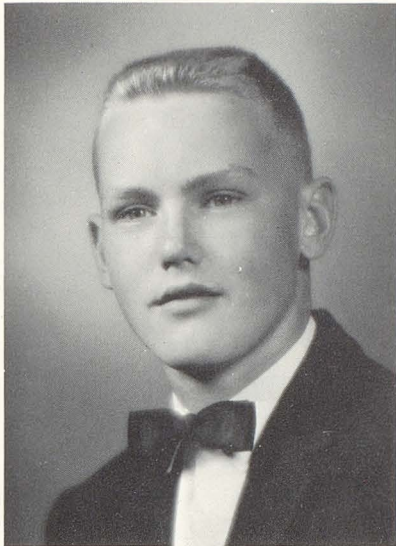
FHA 3,4  
Librarians Club 2,3,4  
GAA 2  
Carnival Queen  
Candidate 4



DALE WENNER JOY  
"Dale"

"The success he  
wants most out of  
school is himself."

Homecoming King  
Candidate 2  
Class Vice President 2



WALTER VERNON JOHNSON  
"Walter"

"When I grow older I  
will grow bolder."

FFA 1,2,3,4

LOREN LYLE JOHNSON  
"Loren"

"A man who is a  
master of patience is  
master of everything."

FFA 1,2,3,4

DEBORAH KAY HUFNAGLE  
"Debby"

"All good girls  
should love their bro-  
thers, but so good I  
have grown that I love  
other girls' brothers  
as well as my own."



Band 1,2,3,4  
Pep Band 1,2,3,4  
Marching Band 1,2,3,4  
Clarinet Quartet 1,2,3,4  
Clarinet Duet 4  
Woodwind Ensemble 3  
Girls' Triple Trio 2  
Chorus 2,3,4  
Operetta 1,2  
Jr. Class Play  
FHA 2,3,4  
GAA 2,3  
(Treasurer 3)  
Black Quill  
Booster 1,2,3,4

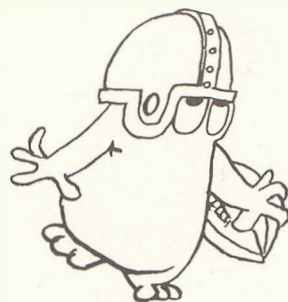




DENNIS FAYE JUELSON  
"Clyde"

"When everyone minds his own business, business is good."

- Chorus 2,3
- Basketball 1,2
- Football 2,3,4  
(Co-captain 4)
- Track 1,2
- Student Council 3,4  
(Treasurer 3)
- Homecoming King 1
- Black Quill



SUSAN KAY KALLIO  
"Sue"

"They say she's a bashful girl who came to school to learn; she didn't used to like the boys but things will take a turn."

- Band 1,2,3
- GAA 4
- FHA 4
- Librarians Club 4



KAREN ANN KUPCHO  
"Karen"

"Like a star, she's always twinkling."

- Chorus 2,3,4
- Jr. Class Play
- Operetta 2
- FHA 2,3,4
- Ushers Club 3,4  
(Secretary 4)
- Librarians Club 3,4  
(Secretary 3)
- Student Council 3,4  
(Secretary 4)
- Black Quill
- Blackduckling 4
- Booster 4



PATRICIA LYNN MATHENY  
"Pat"

"It's people who work and try as hard as she, that succeed."

- FHA 2,3,4
- FTA 4  
(Treasurer 4)
- FSA 3
- Girls' State 3
- National Honor Society
- Black Quill

- Band 1,2,3,4
- Pep Band 3,4
- Woodwind Ensemble 3
- Accompanist:
- Chorus 2,3,4
- Girls' Glee Club
- Mixed Ensemble 2,3,4





JUDITH MARIE MOEN  
"Judy"

"If I appear to be quiet, you don't know me very well."

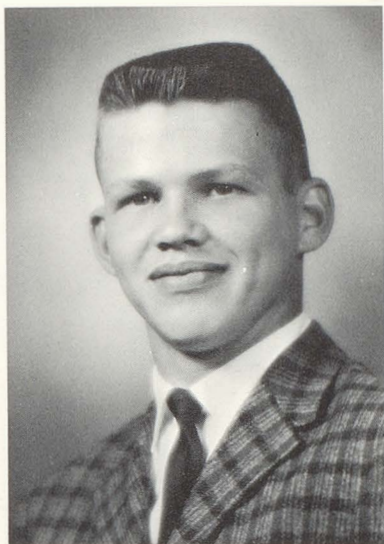
FHA 4  
GAA 4  
Librarians Club 4



PAUL RICHARD MITTON  
"Paul"

"Life would be dull without a little mischief."

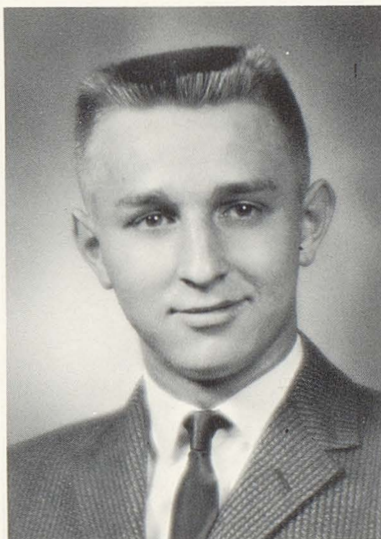
Band 2,3,4  
Chorus 3,4  
FSA 2  
Librarians Club 4  
Football Manager 2  
Lettermens Club 3,4



THOMAS JOHN NENDICK  
"Fuzz"

"Girls! You make me blush! "

Band 1,2,3  
Baseball 1,2,3,4  
Basketball 1,2,4  
Track 2  
Football 2,3,4  
(Co-captain 4)  
Lettermens Club 2,3,4  
(President 4)  
Homecoming candidate 3  
Ushers Club 3,4  
Black Quill

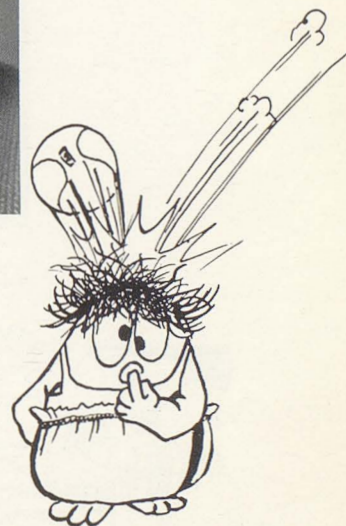


KAREN KAY NELSON  
"Karen"

"Women are perfectly well aware that the more they seem to obey the more they rule."

Band 1,2,3,4  
Pep Band 2,3  
Marching Band 2,3  
Clarinet Quartet 2,3,4  
Chorus 2,3,4  
Operetta 1,2  
Jr. Class Play

FHA 2,3,4  
(Vice President 3,  
President 4)  
GAA 2  
Art Club 1  
Class Secretary 1,3  
Homecoming Queen 1  
Cheerleader 1  
Black Quill  
Booster 4





LONNA MAE NESS  
"Lor."

"Lead me not into temptation, but show me where it is."

- Band 1,2,3,4
- Pep Band 2,3,4
- Marching Band 1,2,3,4
- Operetta 2
- Jr. Class Play
- FHA 2,3,4
- GAA 2,3
- Black Quill
- Booster 1,2,3

SUSAN MARY NISKANEN  
"Sue"

"From school I would gladly flee, but someone is always catching me."

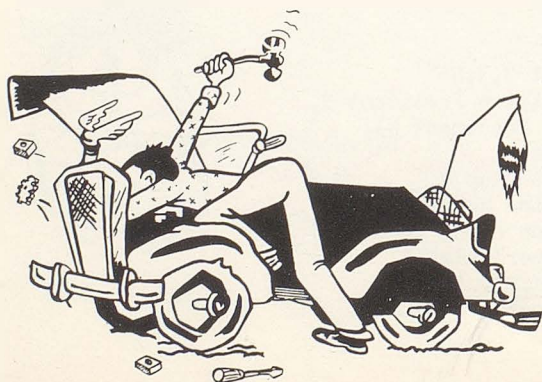
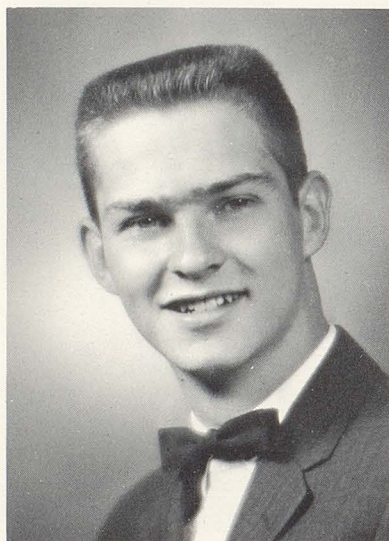
- Chorus 2,3
- GAA 1,2
- Art Club 1
- FHA 2,3,4
- Pep Club 1
- Librarians Club 2
- Majorette 2
- Black Quill



DENNIS DEAN PAGE  
"Len"

"When on the farm I do as the farmers do; when in town I do as I please."

- Band 1,2
- Chorus 2,3,4
- Mixed Ensemble 3,4
- Boys Quartet 3,4
- Jr. Class Play 3
- FFA 1,2,3,4
- Ushers Club 3,4
- Basketball 2,3,4
- Football 4
- Track 2,3,4



RICHARD BRADLEY PATER  
"Pudder"

"Walks as though he's going to a fire; drives as though he set one."

- FFA 1
- Track 1

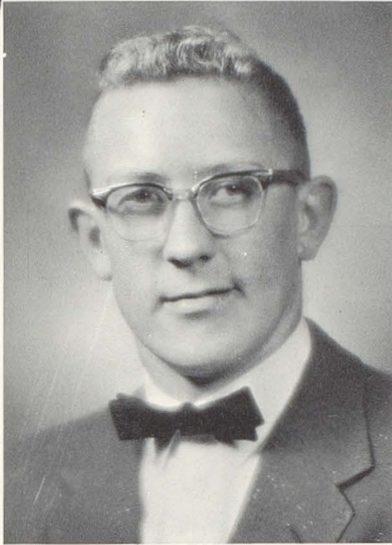




DOROTHY MARGREATE RELLER  
"Dorothy"

"She is a quiet girl  
but quite a girl."

Librarians Club 3



MICHAEL PHILLIP REYNOLDS  
"Mike"

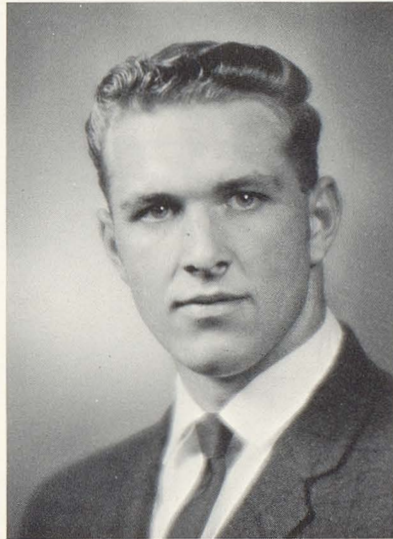
"Enthusiasm is the  
greatest asset in the  
world."

Football 4  
Booster 4

JERRY LEROY ROCKENSOCK  
"Jer"

"If I'm studying  
when you come, wake me  
up."

Chorus 2,3,4  
FFA 1,2,3,4  
Track 2,3,4



CARLA MAY RUDQUIST  
"Carla"

"She has a mind ----  
and she speaks it. She  
has a goal ---- and she  
seeks it. "

Band 1,2,3,4  
Pep Band 1,2,3,4  
Marching Band 2,3,4  
Clarinet Quartet 1,2,3,4  
Chorus 2,3,4  
Operetta 1  
Jr. Class Play  
Declamation 4

FHA 2,3,4  
(Secretary 3,  
Vice President 4)

FTA 4  
(Historian 4)

FSA 3  
Class Treasurer 2  
Class Secretary 4  
National Honor Society  
Black Quill  
(Editor)  
Blackduckling 4





JUDIE KAY TISLAND  
"Jude"

"If silence were worth anything I would not be worth a nickel."

- Chorus 2,3
- Jr. Class Play
- FHA 2
- Librarians Club 3,4
- Pep Club 1
- GAA 1,2,3
- (Vice President 3)
- Glee Club 1
- Booster 1,2



SYLVIA HARRIET STRONG  
"Syl"

"Women are entitled to life, liberty, and the pursuit of men."

- Band 1,2,3,4
- Chorus 2,3,4
- Mixed Ensemble 3
- FHA 3,4
- GAA 4
- (President 4)
- Librarians Club 4



ARLYS RUTH SWEDBERG  
"Arlys"

"Music is well said to be the speech of angels."

- Band 1,2,3,4
- Pep Band 1,2,3,4
- Marching Band 1,2,3,4
- Accompanist :
- Chorus 2,3,4
- Boys' Glee Club 2
- Boys' Quartet
- Trio 1,2,3
- Triple Trio 2
- Mixed Ensemble 2,3,4
- Woodwind Ensemble 3
- Bassoon Soloist 2,3,4
- Black Quill



KATHLEEN MARIE SHINGLER  
"Kathy"

"She smiles at many just for fun, but we all know there's only one."

- Chorus 2,3,4
- Mixed Ensemble 3,4
- Girls' Triple Trio 2
- Jr. Class Play

- FHA 2,3,4
- Librarians Club 3,4
- (Vice President 4)
- Ushers Club 3,4
- (Co-captain 4)
- Pep Club 1
- Class Treasurer 4
- Homecoming Queen 4
- Booster 1,2,3,4
- (Editor 4)
- Black Quill



DOROTHY KAYE WRIGHT  
"Bunny"

"When she can't be  
seen she makes enough  
laughter to be heard."

Band 1,2,3,4  
Pep Band 2,3,4  
Junior Class Play 3  
FHA 2,3,4  
Librarians Club 2,3,4  
Declamation 4  
Booster 1



PHYLLIS JOY WIESE  
"Phyllis"

"It's better to be  
little and shine than  
to be big and cast a  
shadow."

Band 1,2,3  
Marching Band 2,3  
Pep Band 2,3  
FHA 2,3,4  
GAA 4  
Booster 4



MARY EILEEN WAHNSCHAFFE  
"Mary"

"After man came  
woman and she's been  
after them ever since."

FHA 2,3,4  
GAA 4  
Pep Club 1  
Ushers Club 3,4  
Homecoming Candidate 3  
Black Quill  
Blackduckling 4  
Booster 4



LEROY EARL TOLBERT  
"Toby"

"School is all right  
in its place, but where  
is its place? "

Football 1,2,3





"Debby"



"Dale"



"Kerry"



"Pat R."

# YOUNGER

# YEARS



"Carla"



"Karen K."



Seniors in the third grade 1953 - 1954

- Row 1: Graham, Wahnschaffe, Huewe, Matheny
- Row 2: Newell, Beighley, Beier, Bean, Feriancek, C. Beck, Wiese, Pater, Dexter
- Row 3: Juelson, Urness, Hanson, W. Johnson, Erickson, Clawson, Swedberg, W. Beck, Haiby, Corne, Gripp
- Row 4: Nendick, Strong, Shingler, Hufnagle, Costello, Benson, Ness, Butts, Reller, Larson, L. Johnson

Miss Haugen, Teacher



"Kathy"



"Willie"



"Mike"



"Pat M."



"Sue"



"Judi G."

# LATER

# YEARS



"Judi T."



"Kathy"



"Richard"



"Mary"



"Carolyn"



"Mary"



SENIORS IN TENTH GRADE

Row 1: Pater, Gustafson, Crosby, Ness, Strong, Shingler

Row 2: Nendick, Beck, Corne, Costello, Benson, Juelson, Grimsley

"Bonny"



"Terry"

"Wayne"

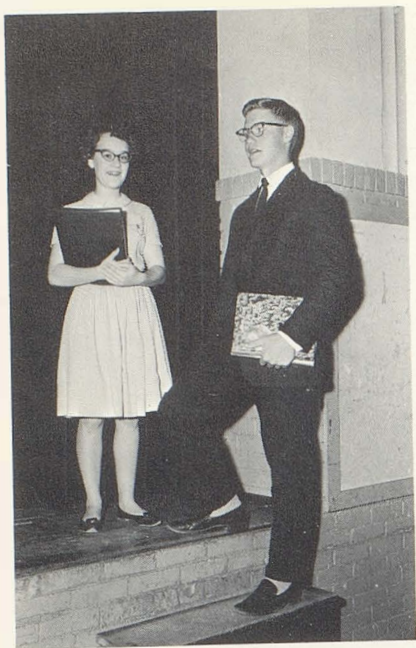


"Dorothy"



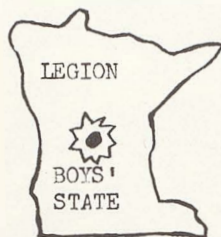
"Eileen"





GIRLS' AND BOYS' STATE

Pat Matheny  
Wayne Beck



SENIOR CLASS OFFICERS AND ADVISORS

Sitting: CeCilee Crosby, Vice President  
Wayne Beck, President  
Carla Rudquist, Secretary  
Kathy Shingler, Treasurer

Standing: Lamma, Advisor  
Cox, Advisor  
Mitton, Advisor  
Gilstad, Advisor





UNDERCLASSEMEN





Row 1: Jenson, S. Swanson, Smith, Pearson, Baird, Davidson, Lucy  
 Row 2: Hanson (adv.), Shingler, Pater, McNeil, Ness, Thorbrogger,  
 C. Anderson, Graham, Steinberg, Jondahl (adv.)  
 Row 3: Lueck, Sand, Roosdett, R. Palmer, D. Palmer, Staudinger,  
 Simmons  
 Row 4: J. Swanson, Vistey, Goltz, Lausche, Bauer

## JUNIOR



FIRST GRADE PLAY

JUNIORS AS SECOND GRADERS  
 MISS OLSON, TEACHER





Row 1: Denny, McConaha, Sadler, Foxx, Williams, P. Swanson  
 Row 2: Graff (adv.), Ranso, C. Simmons, Hunter, Gunther,  
 Hurlbert, Seitz, Thorbrogger (adv.)  
 Row 3: Mitchell, Gulbranson, Brown, Gripp, G. Anderson,  
 Rockensock  
 Row 4: Dexter, Nielson, Warpula, Shaw, Austreng, Tjepkes, Peasley  
 Missing: Landis, Warrington

## CLASS



### JUNIOR CLASS OFFICERS AND ADVISORS

Sitting: Lee Simmons, Treasurer  
 Linda Ness, Secretary  
 Janis Thorbrogger, President  
 David Palmer, Vice President  
 Standing: Graff, Advisor  
 Jondahl, Advisor  
 Throbrogger, Advisor  
 Hanson, Advisor





Row 1: P. Kruger, Thomas, B. Kruger, S. Schiefelbein, Mitchell,  
 J. Schiefelbein  
 Row 2: Huewe, Wilson, Vohs, Kallinen, Clayton, Hansen (adv.)  
 Row 3: Theisen, Swanson, S. Beighley, Dancker, Charlton, Joy  
 Row 4: Carter, Reynolds, Robertson, Lossing, Bertram, O'Brien,  
 L. Miller, Maish

## SOPHOMORE

Row 1: K. Beighley, M. Fellows, Larsen, Bower, Dexter, Graham  
 Row 2: R. Miller, Schmid, Hentges, Bergin, Allen, Erickson, Wild  
 Row 3: Hardy, Bradseth, Vacek, M.L. Fellows, Jacobson, J. Cross,  
 Dremmel (adv.)  
 Row 4: Bemmer, Gregg, Anderson, Strong, Hansen, Adams, D. Anderson





Row 1: Engberg, Lee, Page, Theilman, Scheldrup, Wernberg  
 Row 2: Reisch, Krueger, Shea, Huffman, Palmer, Spindler, McNeil,  
 Moe, J. Cross  
 Row 3: Manthei, Costello, Kupcho, Goodwin, Forseen, Hufnagle,  
 Washington  
 Row 4: Gladen, Goltz, Thorbrogger, Koebernick, Berg, Melstrom,  
 Steinberg, Wright, Gorden (adv.)  
 Missing: Baazard, Gilstad, Haynes, Tisland, Whiting

# CLASS



## SOPHOMORE CLASS OFFICERS AND ADVISORS

- Sitting: Jean Costello, Treasurer  
 Marilyn Fellows, President  
 Helen Gladen, Secretary  
 Standing: Dremmel, Advisor  
 Jim Gregg, Vice President  
 Hansen, Advisor





- Row 1: P. Erickson, Mitton, Ranso, Feriancek, Reinard, Washington, Grundmeier, Berg, Lien,  
 Row 2: Swanson, Christianson, Simonson, Johnson, Beier, Page, Safe, Hurlbert, Kupcho, Kroeger  
 Row 3: Gilstad, Owen, Reed, Michalek, Braun, Edmonds, Hentges, R. Dexter, Haiby, Eberly (adv.)  
 Row 4: Dufseth, E. Nelson, Week, Sweedman, Falk, Brambrink, Gorden, Gulseth, Magnuson



## FRESHMAN CLASS

- Row 1: Seitz, F. Vannett, Forthun, McLaurie, B. Kruger, Leonard,  
 Row 2: Parker (adv.), Ankeney, Bucher, Gross, Adams, Smith, Shaw, Prickett, Miller  
 Row 3: Moon, D. Nelson, G. Dexter, Niemeyer, V. Vannett, Williams, J. Hower, Peterson (adv.)  
 Row 4: Murray, Tisland, Newell, Affield, Field, Pater, Couchon, Bradseth, Baazard  
 Missing: H. Erickson, L. Erickson, M. Hower, Lossing





Row 1: Parker, Johnson, Stenson, Reisch, McNeil, Wahnschaffe,  
Charlton  
Row 2: Cross, R. Theisen, Gladen, Toenyan, Patsy Langord, Leonard,  
Wiese, Beighley  
Row 3: Bergren, Anderson, Rockensock, Lucy, Baltas, Affield,  
Peggy Langord, Dufseth, Gustafson (adv.)  
Row 4: Stephens, Wallin, Cox, Wild, Hanson, Spencer, Nord

## EIGHTH GRADE



Row 1: Scheldrup, Coburn, Wingren, Peasley, Swanson, Gross  
Row 2: Freyholtz, Engberg, Kilde, K. Theisen, Nagel, Week  
Row 3: Tjepkes, Hardy, Kuhlman, Lindquist, Krueger, Wentworth,  
Field, Christianson (adv.)  
Row 4: Stegman (adv.), Smith, Grace, Juelson, Efta, McLaurie,  
Koebernick



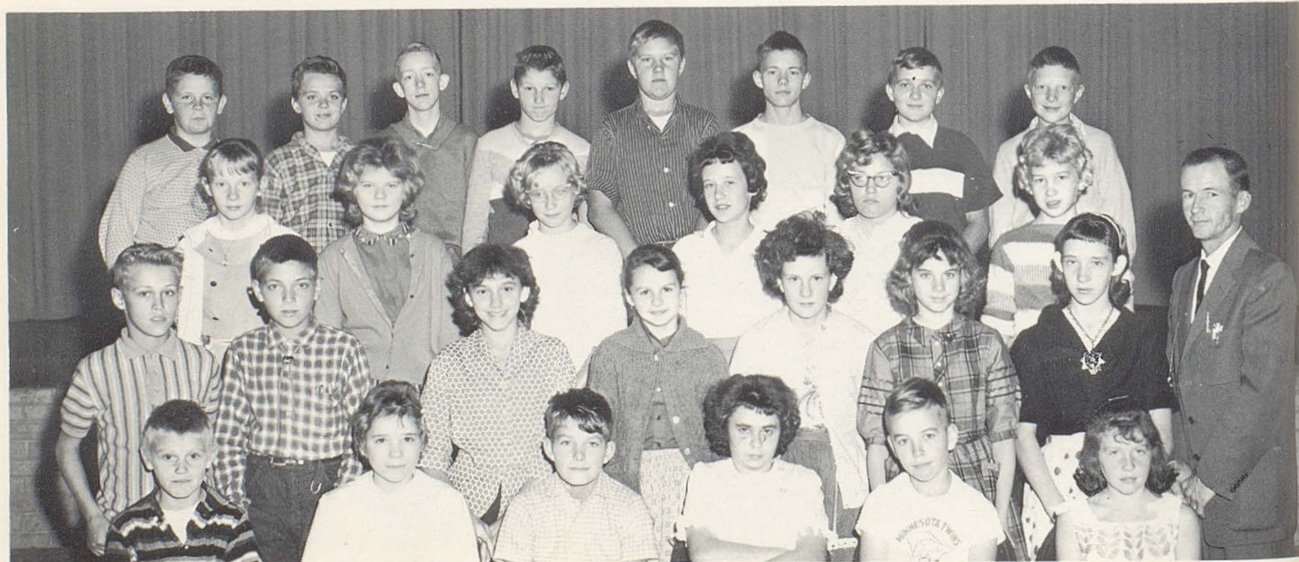


Row 1: Schwegel, Huewe, Bishop, Bergin, Shingler, Spindler, Mitchell, Theisen  
 Row 2: Dexter, Hayes, Mitton, L. Smith, Week, Wild, Erpelding, Nelson, Stenson, D. Grundmeier  
 Row 3: Ashley (Adv.), S.D. Palmer, C. Swanson, Tisland, E. Hentges, L. Swanson, Bengston, Hines, Baltes, J.S. Palmer, Fillbrandt (Adv.)  
 Row 4: Kroeger, Hanson, Lossing, Nord, Gregg, Huffstutler, Swedberg, Hufnagle, Anderson



## SEVENTH GRADE

Row 1: Kruger, McNeil, Reinard, Seitz, Lucy, Jacobson  
 Row 2: Gross, Adams, L. Hentges, Peasley, Newell, C. Pater, Tjepkes, Stomberg (Adv.)  
 Row 3: Ostlund, Gilbertson, Cross, Falk, B. Pater, Owen  
 Row 4: Prickett, Kuhlman, Gruer, Freyholtz, K. Smith, E. McLaurie, R. McLaurie, L. Grundmeier  
 Missing: Fellows, Foxx, Murray





NINTH GRADE OFFICERS AND ADVISORS

Seated: Owen, president  
Michalek, secretary  
Gorden, treasurer  
Gulseth, vice president  
Standing: Eberly, advisor  
Parker, advisor



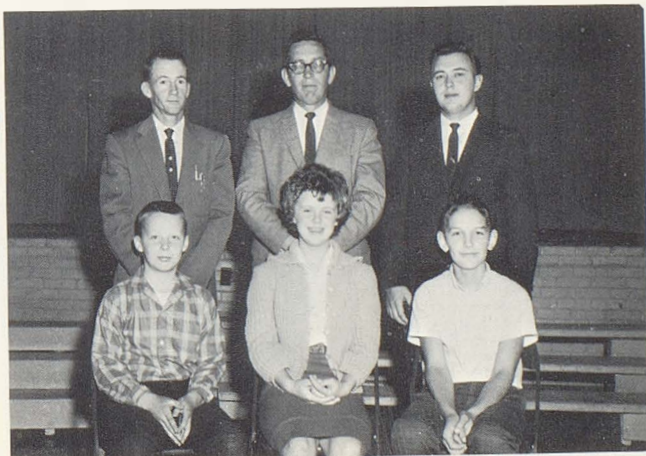
EIGHTH GRADE OFFICERS AND ADVISORS

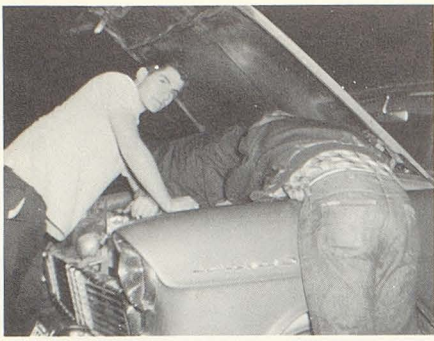
Seated: Nord, vice president  
Wiese, president  
Spenser, secretary  
Peasley, treasurer  
Standing: Stegman, advisor  
Christianson, advisor  
Gustafson, advisor



SEVENTH GRADE OFFICERS AND ADVISORS

Seated: S.D. Palmer, president  
Swedberg, vice president  
Hufnagle, secretary-treasurer  
Standing: Stomberg, advisor  
Ashley, advisor  
Fillbrandt, advisor

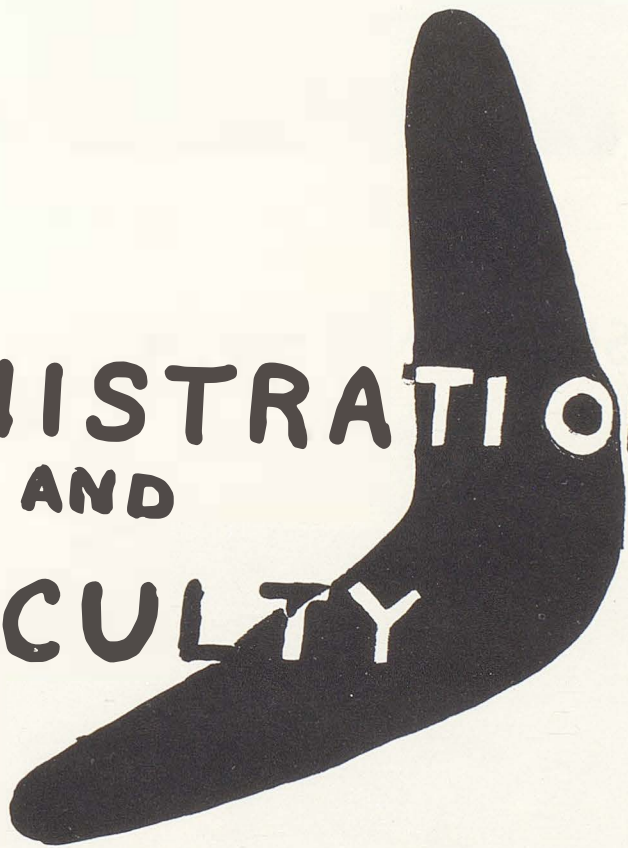




# SNAPSHOTS



ADMINISTRATION  
AND  
FACULTY





Gary S. Olson

## SUPERINTENDENT

Secretary  
Margaret Graham



## IN MEMORIAM

Mr. George Bauer, an active member of the Blackduck School Board for twelve years and serving as clerk, suddenly passed away at his home on January 24. Mr. Lorenz Nelson is filling out the remainder of his term.



## PRINCIPAL

Neal E. Slindee



Joan Gunderson  
Secretary

## SCHOOL BOARD

Rice, Bauer, Gulseth, Cross, Stephens, Newcomb





JOHN GRAFF

Mankato State College, B.S.

"Now, if you'll take out about three sheets of paper, we'll have a short quiz."

# ENGLISH

BETTY PARKER

Hibbing Junior College  
University of Minnesota,  
Duluth Branch, B.S.

"Richard! Who's running this class? "



BEVERLY JONDAHL

Bemidji State College, B.A.

"Class, you may do whatever you wish tomorrow as long as it is lettering."

# LANGUAGE

ERNEST ASHLEY

Bemidji State College, B.S.

-¡En español, por favor!



# SOCIAL STUDIES

VERNON EBERLY

Valley City Teachers College, B.S.

"That test of two weeks ago will be postponed until a week from Tuesday."



ARLYN STOMBERG

Gustavus Adolphus, B.A.  
Bemidji State College, B.S.

"OK, you with the gum in your mouth, STAND UP! "

H. ROGER LAMPPA

University of Minnesota,  
Duluth Branch, B.S.

"Read American Observer, fill out study guides, notebooks are due Friday, and there will be a test Monday."

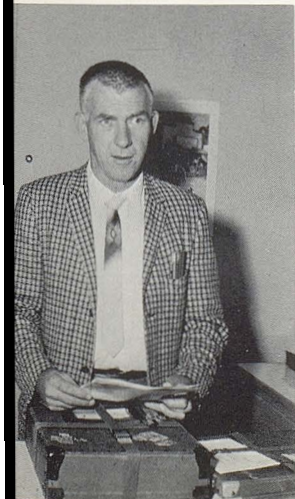


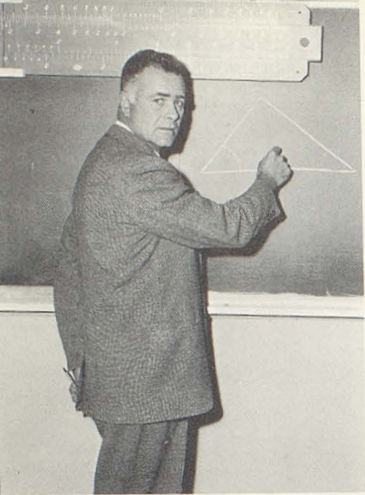
RICHARD MITTON

University of Minnesota, B.S.  
St. Cloud State College, M.S.

"Don't get the wrong impression about these test scores.....you are definitely college material! "

## SPECIAL SERVICE





LLOYD COX

State Normal Industrial College, B.S.  
Ellendale, North Dakota

"The square root of this equation times pi, subtract one-half, divide by one-fourth totals the reciprocal of the complex fraction..... answer book, please."



# MATHEMATICS

ORVILLE FILLBRANDT

Mayville State Teachers College, B.S.

" 'Early to bed, early to rise, makes a man healthy, wealthy, and wise.' "



A. MORRIS GORDEN

University of Minnesota, B.S.

"No, Billy, rock pox isn't contagious."



# SCIENCE

RONALD DREMME

Bemidji State College, B.S.

"Beware of flukes! "





RAY HANSEN

Minot State Teachers College, B.S.

"O.K., girls, that'll be five times for tomorrow!"



## BUSINESS



CLARICE GUSTAFSON

Bemidji State College, B.S.

"O.K.,.....O.K.!.....Well, O.K.!!!"

CAROL STEGMAN

Mayville State Teachers College, B.S.

"O.K., girls, five laps all the way around the gym."



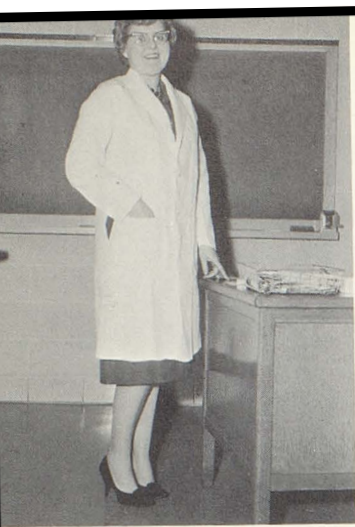
## PHYSICAL EDUCATION

KENNETH CHRISTIANSON

Bemidji State College, B.S.

"....And this is my son, Mark."





ELSIE GERNER

University of North Dakota, B.A.

"How many times do I have to tell you girls, this is a Home Ec. class, not Ladies Aid."



ANN FLOURA

University of Minnesota, B.S.

Her kindness and sincerity make her very likable to all her students.



ROSS PETERSON

University of Minnesota, B.S.

"You should have learned that three years ago, you hayseeds! "

# VOCATIONAL

GEORGE THORBROGGER

Bemidji State College, B.S.

"O.K. you apes, let's get this place cleaned up!"



# LIBRARIAN

MABEL GILSTAD

Hamline University, B.A.

NOTICE!! "The library will be closed until the dater is returned."



KAY SUNDERLAND

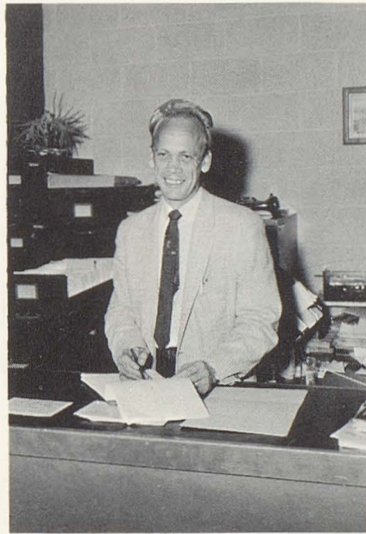
University of North Dakota, B.A.

"Quiet down, chorus! Are you this noisy when Mr. Hanson's here?"

DONALD HANSON

McPhail School of Music, B. Music Ed.

"If this band doesn't start practicing, I'll cut it down to 35!"



# MUSIC





ELEMENTARY PRINCIPAL

Vern Hagen

PRIMARY TEACHERS

V. Hass, Benham, Balstad,  
Hoge, Anderson, Evans



GRADE

FACULTY



INTERMEDIATE TEACHERS

Weatherly, B. Hass, Strong,  
Norin, Falk, Swedberg



SPECIAL EDUCATION

Gorden, Hagen



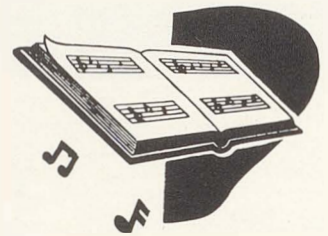
MUSIC





Row 1: T. Hufnagle, Nelson, Beier, K. Shingler, K. Kupcho, J. Shingler,  
 J. Kupcho, Engberg, Davidson, Lucy  
 Row 2: Hanson (Director), Wright, Evans, J. Erickson, Lee, Theilman,  
 Vacek, Pearson, Baird  
 Row 3: Wild, Allen, Ranso, Bemer, Rockensock, L. Dexter, Krueger,  
 Wernberg, Beighley  
 Row 4: Beck, Gustafson, Boyd, T. Costello, S. Strong, Gregg, Page,  
 Bodien, H. McNeil, Graham  
 Missing: G. Anderson, Matheny

## CHORUS

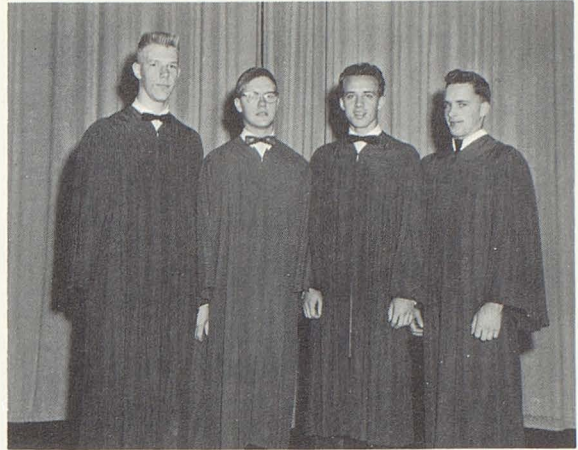


Row 1: Hanson (Director), Rudquist, V. Erickson, Jensen, C. Anderson,  
 Swanson, L. Palmer, Manthei, Crosby, D. Hufnagle  
 Row 2: Swedberg, Forseen Strong, Gladen, M. Fellows, Huffman,  
 J. Thorbrogger, A. McNeil, J. Costello, M.L. Fellows, Shea  
 Row 3: Bergin, Melstrom, R. Thorbrogger, Hentges, Berg, D. Anderson,  
 R. Palmer, Lausche, Bauer, Whiting, D. Dexter  
 Row 4: Hansen, Mitton, Bauer, Goltz, D. Palmer, Wistey, Simmons,  
 J. Rockensock, Cross, N. Anderson, Lueck



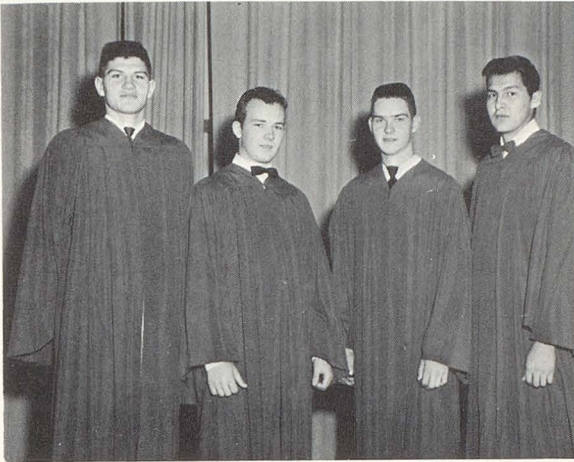
BOYS' QUARTET

Wistey, Beck, Dexter, Rockensock



BOYS' QUARTET

Goltz, Bauer, Page, Boyd



MIXED ENSEMBLE

Row 1: Manthei, Costello, J. Shingler, K. Shingler, McNeil, Thorbrogger, Crosby, Swedberg

Row 2: Beck, Bauer, Wistey, Goltz, Boyd, Page, Rockensock, Dexter





Row 1: Hanson, Spencer, Beier, Baltes, Peggy Langord, Patsy Langord,  
 N. Swanson, Engberg, Parker  
 Row 2: Nelson, Ness, Thorbrogger, Krueger, Braun, V. Goltz, Hunter,  
 Shea, Manthei, Wright  
 Row 3: Christianson, Joy, Michalek, Strong, Jensen, Lindquist,  
 C. Page, S. Page, Palmer, D. Mitton, Wernberg  
 Row 4: Rudquist, D. Hufnagle, Lueck, P. Mitton, D. Palmer, Rockensock,  
 Bodien, Falk, J. Cross, Gulseth, H. Gladen, A. McNeil,  
 Hanson (Director)

## BAND

Row 1: P. McNeil, Huffman, J. Gladen, Wild, Lien, J.S. Palmer, K. Cross,  
 Forseen, A. Swedberg, Evans  
 Row 2: Bergin, L. Mitton, Gregg, D. Swedberg, D. Nord, Ostlund, Gilstad,  
 Hayes, Berg, Hanson (Director)  
 Row 3: E. Cross, L. Nord, Erickson, Cox, T. Hufnagle, R. Hufnagle,  
 Anderson, G. Baltes  
 Row 4: Wistey, J. Goltz, R. Palmer, Lausche, Gustafson, Gorden,  
 S.D. Palmer, Hines  
 Missing: Matheny, Swanson, Magnuson, Wingren





CLARINET SOLO

Thorbrogger



CLARINET DUET

Hufnagle, Thorbrogger



DANCE BAND

Seated: Qladen, Lueck, Strong, Wistey, Thorbrogger  
Standing: Lien, Lausche, Palmer, Goltz





CLARINET QUARTET

Hufnagle, Rudquist, Nelson, Ness



FLUTE QUARTET

Cox, Gilstad, Gladen, Cross

FLUTE TRIO

Huffman, Forseen, Hufnagle





TROMBONE DUET

Goltz, Wistey

SAXOPHONE TRIO

Jensen, Strong, Lindquist



CORNET TRIO

Palmer, Bodien, Rockensock



BASSOON SOLO

Swedberg



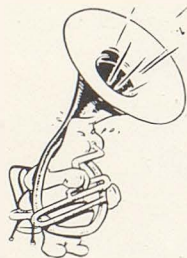
BASS HORN SOLO

Gorden



BASS SOLO

Lausche



BARITONE SOLO

Lien

ACTIVITIES





Seated: Davidson, C. Anderson, J. Shingler, Kupcho (Sec.),  
 K. Shingler (Co-capt.), Smith, Swanson, J. Gripp, Wahnschaffe  
 Standing: Graham, G. Gripp, Gustafson, Nendick, Gorden (Adv.),  
 Costello (Co-capt.), Brown, Page, Beck, G. Anderson, Simmons



## USHERS CLUB

## SPANISH CLUB

Seated: Palmer (Pres.), Shingler (Sec.), Simmons (Vice Pres.)  
 Row 1: Page, Evans, Jensen, Goltz, Hunter, Braun, Reinard,  
 Ashley (Adv.)  
 Row 2: Anderson, Landis, Strong, Gregg, Goodwin, Hentges  
 Missing: Bradseth, Gripp, Matheny





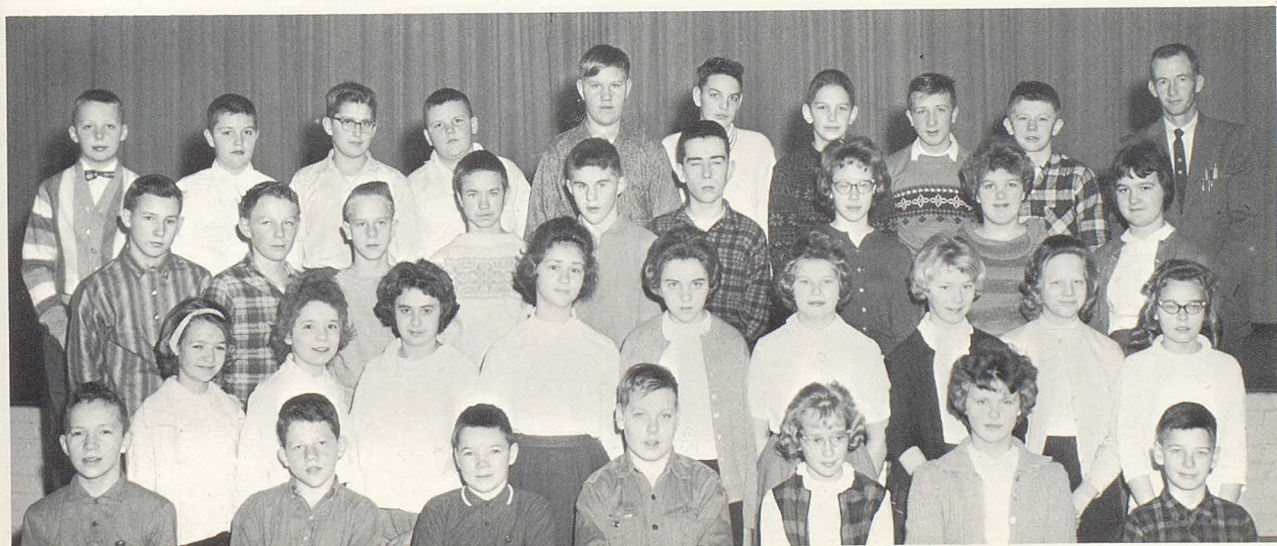
Seated: Simmons (Treas.), Palmer (Vice Pres.), Crosby (Pres.),  
Kupcho (Sec.), Slindee (Adv.)  
Row 1: E. Seitz, Kroeger, D. Anderson, Cox, Gladen, Cross  
Row 2: W. Seitz, Juelson, N. Anderson, Gorden, Berg



## STUDENT COUNCIL

## SAFETY PATROL

Seated: Baltus, Anderson, McNeil, Wallin, Cross, Swedberg, Fellows  
Row 1: Bergin, McNeil, Seitz, Hentges, Erpelding, Nelson, Gladen,  
Theisen, Wahnschaffe  
Row 2: Kilde, Week, Beighley, Stenson, Leonard, Grace, Koebornick  
Rockensock, Nord  
Row 3: S.D. Palmer, J.S. Palmer, Anderson, Hanson, Smith, Huffstutler,  
Hufnagle, Kroeger, Engberg, Stomberg (Adv.)  
Missing: Charlton





## BLACKDUCKLING

Seated: A. McNeil (Assoc. Ed.), B. Graham (Editor)  
 Row 1: Palmer, Rudquist, Huffman, Wahnschaffe, Evans, Fellows  
 Row 2: K. Graham, Kupcho, J. Thorbrogger, Gladen, Crosby  
 Row 3: Landis, B. Thorbrogger, Beck, Hansen (Adv.)  
 Missing: H. McNeil

## PUBLICATIONS

### BOOSTER

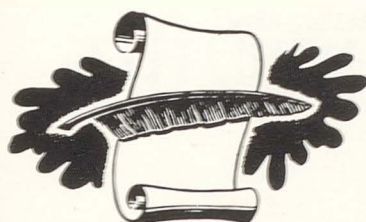
Seated: J. Thorbrogger, (Assoc. Ed.), K. Shingler (Editor)  
 Row 1: Wahnschaffe, Graham, Jensen, Swanson, Fellows, Huffman, Reinard, Cross, Parker  
 Row 2: Evans, J. Costello, J. Shingler, J. Kupcho, Simonson, Baltis, Christianson, D. Anderson  
 Row 3: Beighley, K. Kupcho, Vacek, McNeil, Gladen, Hufnagle, Beier, Nelson, Crosby  
 Row 4: Palmer, Landis, B. Thorbrogger, T. Costello, Berg, Reynolds, Beck, Braun, Hansen (Adv.)  
 Missing: P. Swanson, Allen, G. Anderson







Seated: Crosby, Rudquist, Gilstad (Adv.)  
 Row 1: Graham, Evans, Niskanen, Wahnschaffe, Beighley,  
 Beck, Beier  
 Row 2: Shingler, Kupcho, Hufnagle, Nelson, Ness  
 Row 3: Gustafson, Nendick, Juelson, Costello, Boyd



## YEARBOOK STAFF

Editor . . . . . Carla Rudquist  
 Associate Editor . . . . . Pat Matheny

Business Managers . . . . . Wayne Beck  
 Terry Costello

Class Editors . . . . . Debby Hufnagle  
 Eileen Beier  
 Karen Nelson  
 Lonna Ness

Activity Editors . . . . . Cecilee Crosby  
 Arlys Swedberg  
 Sylvia Strong  
 Sue Niskanen

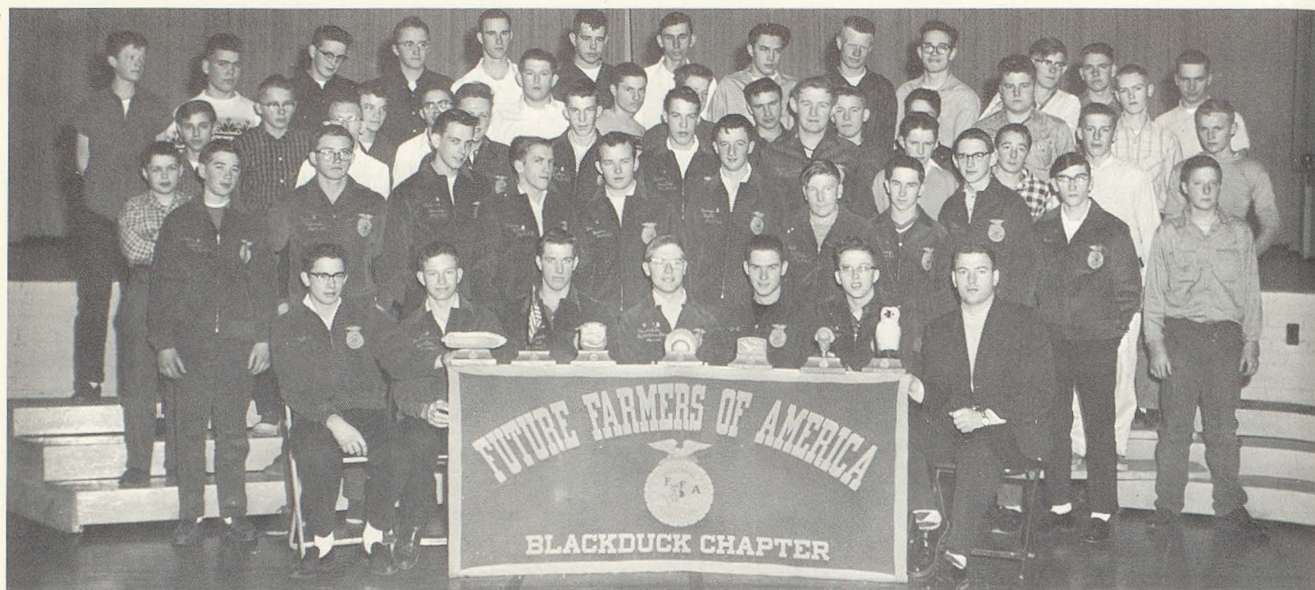
Sports . . . . . Tom Nendick  
 Reynold Gustafson  
 Dennis Juelson

Art Editors . . . . . Melba Beighley  
 Alvin Boyd

Typists . . . . . Becky Graham  
 Karen Kupcho  
 Kathy Shingler  
 Mary Wahnschaffe

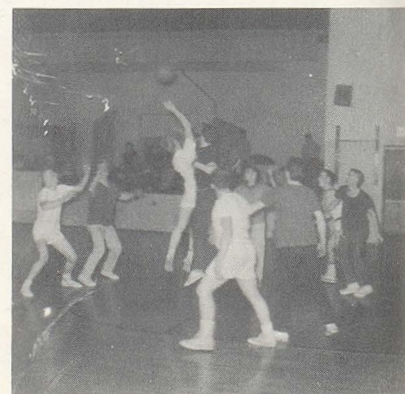
Proof Reader . . . . . Phyllis Evans

Advisor . . . . . Mrs. Mabel Gilstad



- Seated: Sand (Sec.), Graham (Rep.), Rockensock (Sen.), Beck (Pres.),  
Page (V. Pres.), Johnson (Treas.), Peterson (Adv.)
- Row 1: Haiby, L. Tisland, C. Lossing, Hicks, Bauer, Falk, R. Miller,  
Murray, L. Miller, Krueger, Newell
- Row 2: Grundmeier, Bodien, Gilstad, Tjepkes, L. Lossing, Brambrink,  
L. Miller, Scheldrup, Dexter, J. Tisland
- Row 3: E. Seitz, Couchon, Pater, Ranso, R. Gustafson, Dufseth,  
Gripp, W. Seitz, R. Baazard, Reisch, Field, W. Johnson
- Row 4: Jacobson, J. Baazard, Nielson, Warrington, Costello, Shaw,  
Bucher, Davidson, Benson, Koebornick, Week, D. Gustafson,  
J. Rockensock
- Missing: Anderson, Cross, Huewe, Schmid, Prickett, Magnuson, Kroeger,  
Bradseth

## FUTURE FARMERS OF AMERICA



F.F.A. BASKETBALL



Seated: Nelson (Pres.), Thorbrogger (Sec.), Vohs (Treas.), Rudquist (V. Pres.)  
 Row 1: Goltz, Page, Engberg, Schiefelbein, Costello, M. Fellows, Manthei  
 Row 2: Goodwin, Joy, Palmer, Huffman, Shea, Gladen  
 Row 3: Vacek, J. Kupcho, Hardy, Wild, Whiting, M.L. Fellows, Charlton

## FUTURE HOMEMAKERS OF AMERICA

Row 1: Davidson, Jensen, S. Swanson, Pearson, Foxx, Kallio, Evans, Wahnschaffe  
 Row 2: Gerner (Adv.), J. Shingler, K. Shingler, K. Kupcho, Moen, Hufnagle,  
 Beier, Crosby, Boldan, Baird  
 Row 3: Wiese, Charwood, Erickson, Haiby, McNeil, Strong, Gripp, Ness  
 Huffstutler, Anderson  
 Missing: Matheny, P. Swanson, Larson





Seated: Shingler (Pres.), Huffstutler (Sec.-treas.)  
 Row 1: Kallio, Davidson, Graham, Pearson, Vohs, S. Schiefelbein, Kruger, M. Hower  
 Row 2: Feriancek, J. Hower, Boldan, J. Gripp, Gross, Shaw Allen, Moen, M. Williams, Gilstad (Adv.)  
 Row 3: Bucher, H. Williams, Kurcho, J. Shingler, Dancker, Beighley Mitton, Bauer, Costello, Seitz  
 Missing: Tisland, Strong, Denny, Reinard, P. Swanson, Baird, G. Gripp G. Anderson

## LIBRARIANS CLUB

Row 1: Gross, McConaha, Clayton, Hunter, Kuhlman, Krueger, Theisen  
 Row 2: G. Swanson, Thomas, Field, Johnson, Peasley, Gilstad (Adv.)  
 Row 2: Wright, Steinberg, Niemeyer, Efta, Pater, Feriancek, Moe  
 Missing: Sadler, Reinard, Charlton





## SENIOR

**Seated:** Vohs (Sec.-treas.), Strong (Pres.), Gladen (Vice Pres.)

**Row 1:** S. Schiefelbein, Davidson, Pearson, Williams, McConaha, Wahnschaffe, Feriancek, Kallio

**Row 2:** J. Schiefelbein, Huffman, Palmer, Shea, Charlton, Goodwin, Goltz, Moen, Wiese, Boldan

**Missing:** Baird, Swanson

# GIRLS' ATHLETICS



## JUNIOR

**Seated:** Parker, N. Swanson, Cox, Baltes

**Row 1:** Bergin, McNeil, Gross, Gladen, L. Swanson, Lengord, B. Swanson, Wahnschaffe

**Row 2:** Gilstad, Beier, Peasley, Nord, Field, Hentges, Mitton, Stegman (Adv.)

**Row 3:** Affield, Gregg, Hanson, Langord, Koebornick, Forthun





Seated: Brown (Sec.-Treas.), Nendick (Pres.), C. Simmons (Vice Pres.)  
 Row 1: Thorbrogger (Adv.), Steinberg, R. Thorbrogger, Bauer, Melstrom,  
 Lausche, Gulbranson,  
 Row 2: L. Simmons, D. Anderson, Hentges, Shaw, N. Anderson, Goltz,  
 Gulseth, Cross, Rockensock, Gustafson, Bazaard, Palmer, Strong  
 Row 3: McNeil, Graham, Boyd, Berg, Gregg, Mitton, Swanson, Costello,  
 Hansen, Reynolds, Juelson

## LETTERMENS CLUB

## DECLAMATION



Row 1: Jondahl (Adv.), Rudquist, K. Cross, Parker, Gladen, Nelson,  
 L. Hentges, Feriancek, Swedberg, Graff (Adv.)  
 Row 2: Gustafson (Adv.), Evans, L. Swanson, Affield, Baltes, Cox,  
 Krueger, E. Cross, Jensen, S. Swanson, Mathery, Parker (Adv.)  
 Row 3: Anderson, Steinberg, Gregg, Hanson, J. Costello, P. Hentges,  
 McNeil, Thorbrogger, Fellows, T. Costello, Beck, Gilstad (Adv.)  
 Missing: Hardy, Mitton, Bodien, Thomas





Juniors left,  
Seniors below

Left to right: Palmer, McNeil, Thorbrogger

# NATIONAL HONOR SOCIETY

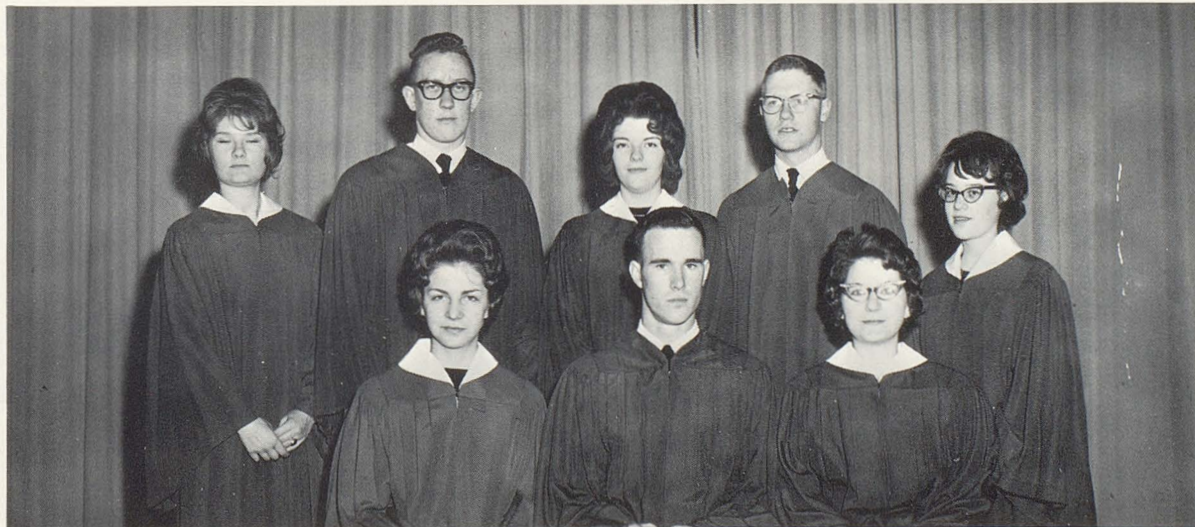


Left to right: Swedberg, Evans, Beck, Rudquist,  
Shingler, Matheny, Crosby



# HONOR GRADUATES

Seated: Rudquist, Costello, Evans  
Standing: Crosby, Reynolds, Shingler, Beck, Matheny





Row 1: Jensen, Swanson, Thorbrogger, McNeil, Shingler, Davidson  
 Row 2: Wistey, Lausche, Landis, R.Palmer, Graham, Simmons, Graff (Director)  
 Missing: D. Palmer, Ness, Lueck

## THE CLASS OF '64 PRESENTS

# JANUARY THAW

### CAST

Herbert Gage . . . . .	David Palmer
Marge Gage . . . . .	Janis Thorbrogger
Sarah Gage . . . . .	Sherry Swanson
Paula Gage . . . . .	Connie Davidson
Barb Gage . . . . .	Judy Shingler
Mr. Loomis . . . . .	Lee Simmons
Carson . . . . .	Barry Wistey
Mr. Rockwood . . . . .	Gary Lueck
Mrs. Rockwood . . . . .	Jean Jensen
Matt Rockwood . . . . .	Dennis Landis
Constable . . . . .	Keith Graham
Uncle Walter . . . . .	Robert Palmer
Frieda . . . . .	Linda Ness

Director . . . . . John Graff  
 Student Director . . . . . Ann McNeil







Seated: Manthei, Matheny  
 Standing: Thorbrogger, Parker (Adv.), Crosby

## THE ONE ACT PLAY

# GRAY BREAD

### CAST

Riga . . . . . an old woman . . . . . Janis Thorbrogger  
 Solda . . . . . her daughter . . . . . Cecilee Crosby  
 Yolande . . . . . her granddaughter . . . . . Eileen Manthei  
 Motka . . . . . child of the village . . . . . Pat Matheny





RETIRING KING  
DALE BEIER



KING DARRY ANDERSON

QUEEN KATHY SHINGLER

# HOMECOMING





QUEEN SANDI BOWER

PRINCESS CAROL MICHALEK



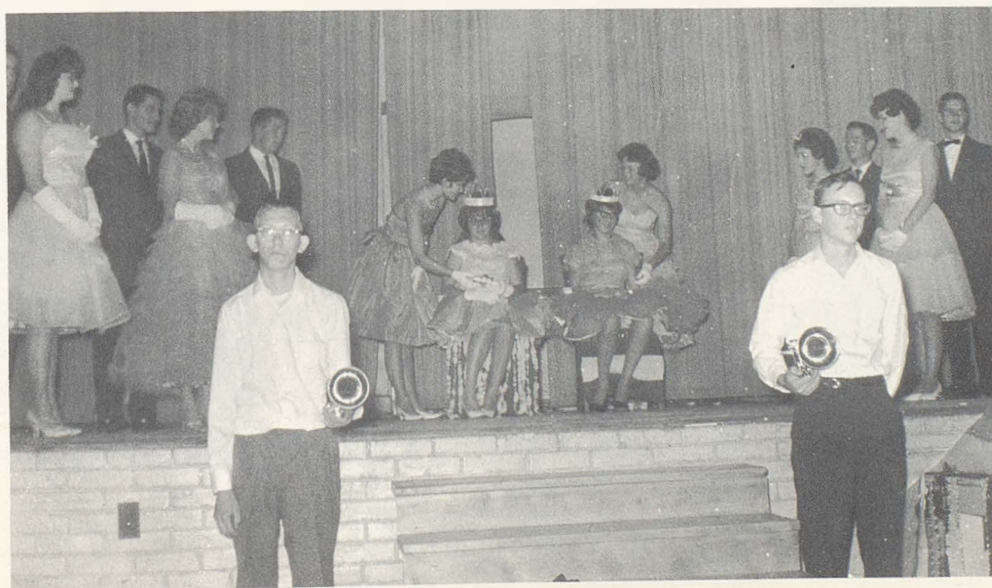
CANDIDATES

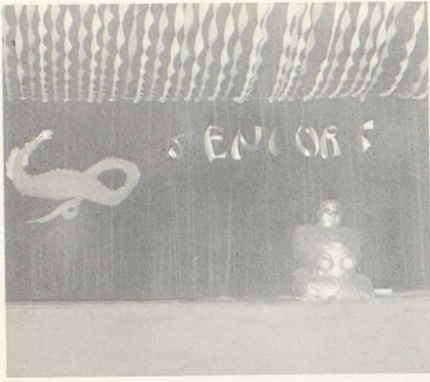


# CARNIVAL



RETIRING QUEEN CECILEE CROSBY  
RETIRING PRINCESS MARILYN FELLOWS



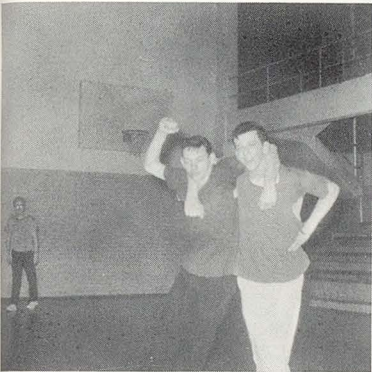
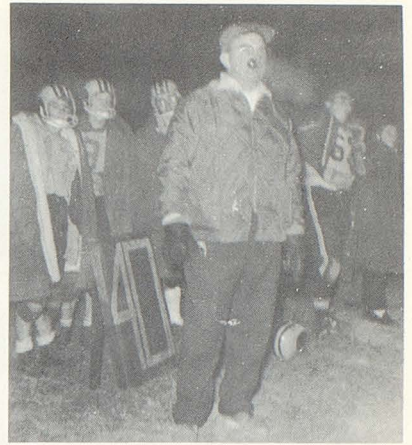
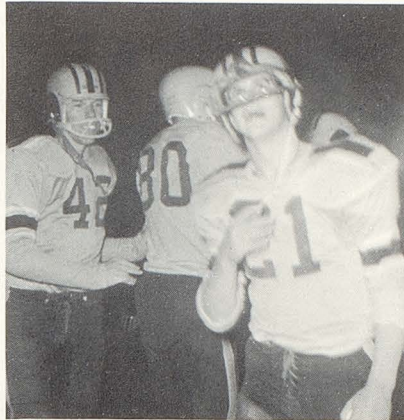
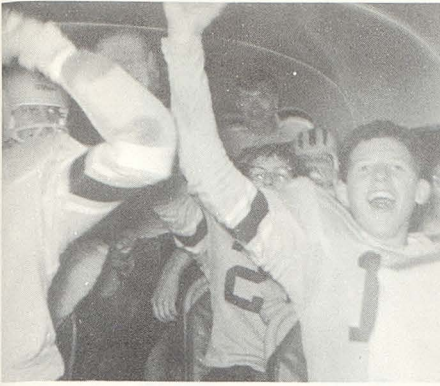


# JUNIOR-SENIOR PROM —

# ORIENTAL HOLIDAY



# ACTIVITIES





## COOKS

Klug, Floura, Jones

## CUSTODIANS

Austreng, Leonard

## SERVICES

## NURSE

Falk



## BUS DRIVERS

Standing: Gosch, Cross, Baltes, Lom, Gustafson, Haiby  
 Kneeling: Whitcomb, Coe, Flodeen, Anderson



SPORTS





Row 1: R. Hanson, Stenson, Lien, Austreng, Dexter, Bergin, Graham, Rockensock, Page, D. Anderson  
 Row 2: D. Anderson, D. Hansen, Thorbrogger, Bauer, Brown, Juelson, Nendick, C. Simmons, Lausche, L. Simmons, Goltz, Shaw  
 Row 3: Thorbrogger (Coach), Hentges, Gregg, Strong, Swanson, Costello, Wistey, N. Anderson, Reynolds, Gulseth, Cox (Coach), Eberly (Coach)  
 Row 4: Steinberg, Palmer, Affield, Landis, Gorden, Dufseth, Kroeger, Gulbranson  
 Missing: Koebnick, Baazard

# FOOTBALL



## OFFENSE

Line: Hansen, Shaw, Bauer, Goltz, Lausche, Brown, Nendick  
 Backfield: Juelson, D. Anderson, C. Simmons, Thorbrogger, L. Simmons







## CO-CAPTAINS

Juelson,  
Thorbrogger (Coach),  
Nendick



## ALL CONFERENCE

Nendick,  
C. Simmons



## MANAGERS

Thorbrogger (Coach),  
Cross,  
Graham,  
Steinberg,  
Nord,  
Melstrom



## DEFENSE

Line: Hentges, Shaw, Wistey, Gregg, Reynolds

Backfield: Simmons, Palmer, Nendick, Costello, N. Anderson, Swanson





### "A" TEAM

Seated: Simmons, Graham, Hentges, Lausche, Thorbrogger  
 Standing: Eberly (Coach), Brown, Hansen, Goltz, Wistey, Berg

## BASKETBALL

### "B" TEAM

Seated: Graham, D. Anderson, N. Anderson, Strong, Gulseth  
 Standing: Lamma (Coach), Lien, Jacobson, Gorden, Cross, Kroeger,  
 Mitton, Berg  
 Missing: Gregg

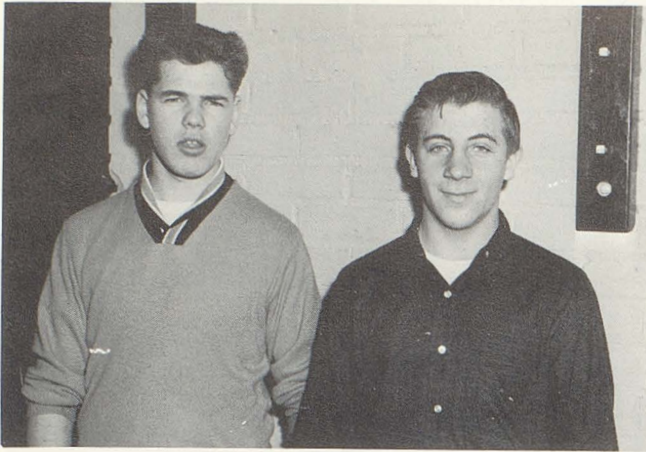




Row 1: L. Simmons, Gulseth, Hansen, C. Simmons, Nendick, Thorbrogger, Berg, Lausche  
Row 2: Grace, Steinberg, D. Anderson, D. Graham, Hentges, Jacobson, Moe  
Row 3: McNeil, Thorbrogger (Coach), Cross, Bauer, Goltz, Swanson, Gorden, D. Anderson, Affield

## BASEBALL





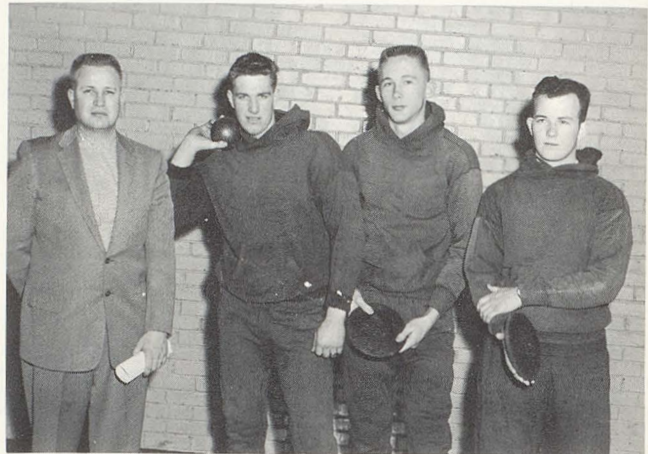
## MANAGERS

Affield, Steinberg



## WEIGHTMEN

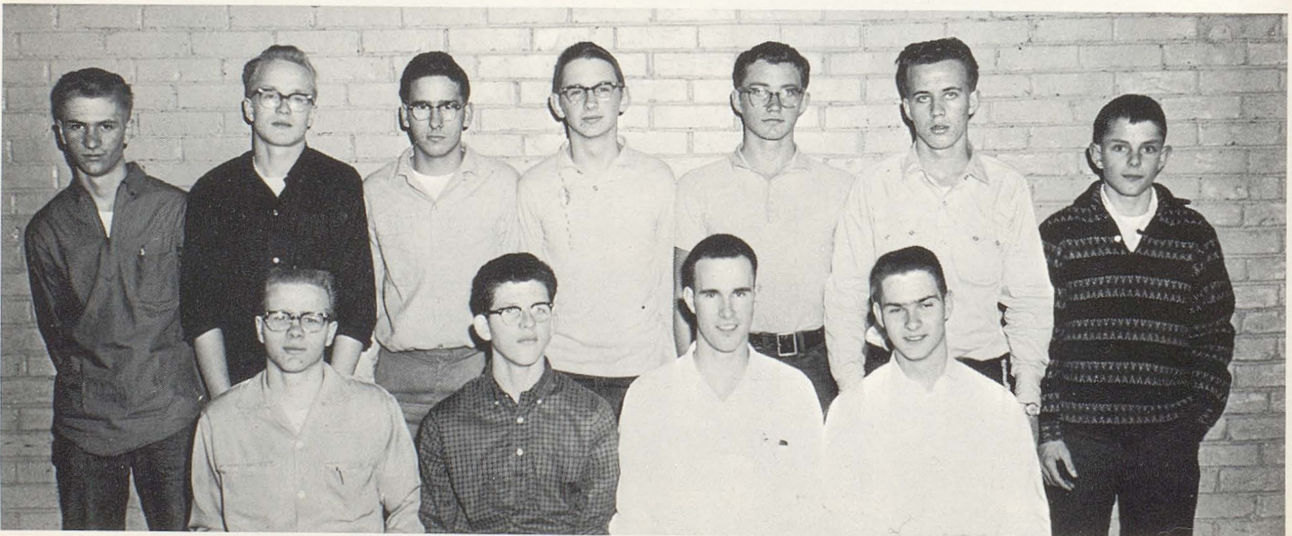
Lamppa (Coach), Rockensock,  
Berg, Bauer



## TRACK

## RUNNERS

Seated: Lausche, N. Anderson, Costello, Page  
Standing: Melstrom, D. Anderson, Carter, Miller, Tisland, Dexter,  
Graham





Left to right: Parker, Cox, Page, Baltes

## "B" TEAM:



## MAJORETTE

Swanson



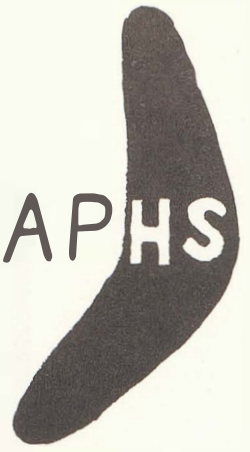
## CHEERLEADERS

## "A" TEAM

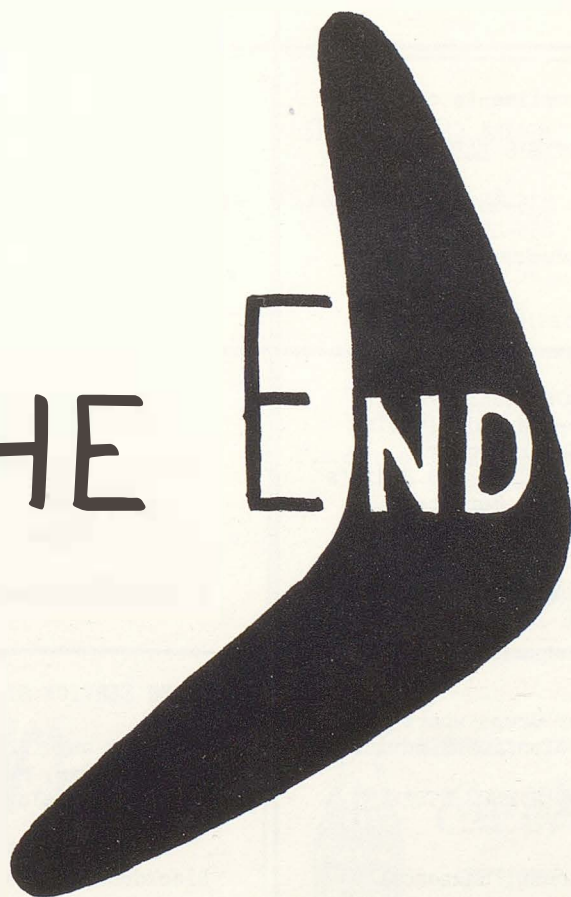
Left to right: Fellows, S. Swanson, Goodwin, Huffman, P. Swanson

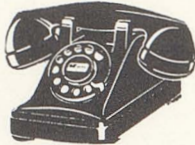






# AUTOGRAPHS



THE END



<p>Compliments of</p> <p>BOARD of EDUCATION</p>	<p>CONGRATULATIONS SENIORS</p> <p>DRAKE THEATRE</p> <p>Blackduck, Minnesota</p>	<p>Compliments of</p> <p>BLACKDUCK EDUCATION ASSOCIATION</p>
<p>BLACKDUCK STATE BANK</p> <p>A good bank in a good community</p> <p>General Banking &amp; Insurance</p>	 <p>BLACKDUCK TELEPHONE CO.</p>	<p>BLACKDUCK BAKERY</p> <p>Meals-Lunches-Pastries</p> <p>Private Dining Room</p> <p>Barbara and Richard Nord</p>
<p>HARTZ SUPER MARKET</p> <p>Quality Foods</p> <p>Phone 835-4244</p> <p>Blackduck, Minnesota</p>	<p>WOLDEN'S "66" SERVICE</p> <p>Blackduck, Minnesota</p> 	<p>RED &amp; WHITE</p> <p>Summit Merc. Co.</p> <p>Red &amp; White Groceries</p> <p>Fresh Meats &amp; Vegetables</p> <p>Hardware and Sporting Goods</p>
<p>Compliments of</p> <p>MARTIN'S ELECTRIC</p> <p>835-4414</p> <p>835-4531</p> <p>Blackduck, Minnesota</p>	<p>NENDICKS HARDWARE &amp; GAMBLE AGENCY</p> <p>Fairbank Morse Pumps</p> <p>Appliances</p> <p>General Hardware</p> <p>835-6698 Blackduck, Minn.</p>	<p>BLACKDUCK CLEANERS &amp; LAUNDERETTE</p> <p>Phone 835-4277</p> <p>Blackduck, Minnesota</p>
<p>ANDERSON JEWELRY AND TV</p> <p>Watches-Diamonds-Jewelry</p> <p>Watch Repair</p> <p>Brand Name TV's and Radio's</p> <p>Repair Service</p> 	<p>LINDQUIST TRUCK SERVICE</p> <p>Local &amp; Long Distance</p> <p>835-4286</p> <p>or</p> <p>835-4986</p> <p>Blackduck, Minnesota</p>	<p>BLACKDUCK LANES</p> <p>Fun for both young and old</p> <p>"Bowl Blackduck Lanes"</p> <p>Frank and Edna Pafko</p> <p>Blackduck, Minnesota</p> 
<p>Buy your drugs where you can get professional advice at</p> <p>MOON'S DRUG STORE</p> <p>Blackduck, Minnesota</p>	<p>CROSS SERVICE STATION</p> <p>"Where you buy for less"</p> <p>Batteries, Gas, Mufflers, Oil, Wheel Balancing</p> <p>Phone 835-4548</p> <p>Blackduck, Minnesota</p>	<p>CO-OPERATIVE OIL ASS'N</p>  <p>Service Station</p> <p>Bulk Orders</p> <p>Gold Bond Stamps</p> <p>Gas-Oil-Tires-Batteries</p> <p>Repairs, Service, &amp; Sales</p> <p>Blackduck 835-4905</p>





**Cooper's Studio**  
BEMIDJI, MINN.

BEN FRANKLIN STORE  
"More for your money at  
BEN FRANKLIN everytime"

Bemidji, Minnesota



THE COACHMAN CAFE  
Bemidji, Minnesota

SECURITY STATE BANK  
"The bank with the chime clock"

Bemidji, Minnesota

SECURITY BARBER SHOP

Minor Bakke

Bemidji, Minnesota

RAY CASTLE'S BARBER SHOP

305 Beltrami Avenue  
Bemidji, Minnesota

We specialize in flattops!

Compliments

PIONEER PUBLISHING CO.  
Daily Pioneer-Weekly Sentinel

Bemidji, Minnesota

CONGRATULATIONS !

NAYLOR'S

Bemidji, Minnesota

HARTZ SUPER MARKET

Quality Foods

Bemidji, Minnesota

Compliments of  
BEMIDJI AUTO PARTS COMPANY

Bemidji, Minnesota

SPECIALIZED MUSIC STUDIO

ROOM 14  
NORTHERN NATIONAL  
BANK BUILDING

DENNIS PETERSON  
PLaza 1-5159

BEMIDJI, MINNESOTA

THE TURTLE CLUB and LOUNGE  
(10 miles north of Bemidji  
on Hwy. No. 71)  
SERVING THE FINEST FOOD



Steaks                      Walleyed Pike  
Fried Chicken            Sea Foods  
Bar-B-Cued Ribs        Sandwiches

Dining Room            586-3774  
Bar                        586-9211

Bemidji, Minnesota

THIRD STREET CAFE  
"Where Friends Meet"

Bemidji, Minnesota

We buy, sell, & trade  
New & Used  
Furniture-Bedding-Appliances-  
Linoleum  
Rugs-Guns-Shells  
DEWEY'S FURNITURE &  
HARDWARE CO.  
Orley W. Ware & Arnold M. Moe  
206-08 Minn. Avenue, Bemidji

**O'Meara's**

Bemidji, Minnesota









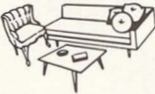


BEMIDJI

**Coca-Cola**

BOTTLING

COMPANY

<p>NORTHLAND LUMBER CO. Complete Selection of Building Materials and Builders Hardware</p> <p>Ken Tebben, Mgr. 835-7745 Blackduck</p>	<p>BEIER'S MEAT SERVICE</p> <p>"The best in meat and meat service"</p> <p>Phone 835-4236 Blackduck, Minnesota</p>	<p>GLADEN TIMBER COMPANY Pulpwood Logs Lumber Other Forest Products</p> <p>Office 835-6688 Residence 835-4254</p>
<p>BLACKDUCK COOPERATIVE CREAMERY &amp; DAIRY</p> <p>Oldest in Beltrami County Owned and Controlled By the Farmers</p> <p>Dial 835-7744 Blackduck, Minnesota</p>	<p>JERRY'S BARBER SHOP</p> <p>Familiar with all Popular haircuts.</p> <p>Phone 835-4543 Blackduck, Minnesota</p>	<p>Compliments of</p> <p>J. R. Palmer &amp; Son</p>
<p>Compliments of B &amp; J Timber Company</p> <p>Fred Benson</p> <p>Phone 835-7777 Blackduck, Minnesota</p>	<p>Congratulations Seniors!</p> <p>KAYE'S BEAUTY SHOP</p> <p>Phone 835-4543 Blackduck, Minnesota</p>	<p>Best Wishes</p> <p>SQUAW LAKE COOPERATIVE CREAMERY</p> <p>Squaw Lake, Minnesota</p>
<p>Compliments of</p> <p>Dr. Hegland</p> <p>Blackduck</p>	<p>BEIGHLEY BROTHERS City and Rural Basement Digging Trenching Road &amp; Cement Gravel Black Dirt &amp; General Hauling</p> <p>Ben F. Beighley 835-4206 Harry Beighley 835-6609 Tom Beighley 835-6659</p>	<p>CONGRATULATIONS to the seniors of Blackduck High School</p> <p>A &amp; W DRIVE-IN Blackduck, Minnesota</p>
<p>HEDLUND'S STANDARD SERVICE</p> <p>Cabins Groceries Fishing Tackle</p> <p>Fishing &amp; Game Licenses Tenstrike, Minnesota</p>	<p style="text-align: center;"><b>Blackduck Plumbing &amp; Heating</b></p> <div style="display: flex; justify-content: space-around; align-items: center;">  <div style="text-align: right;"> <p>Rudquist &amp; Miller</p> <p>Phone 835-4416</p> </div> </div>	
 <p>MARV'S MOBIL SERVICE Marvin Gunderson, Proprietor</p>	<p>Congratulations to the Class of 1963</p> <p>LUTHERAN BROTHERHOOD</p> <p>Wilfred Marks Phone PL 1-5548 Bemidji, Minnesota</p>	 <p>Production Specialists, Inc. Blackduck, Minnesota</p>

<p>Compliments of Mr. &amp; Mrs. Herbert E. Olson</p>	<p>Compliments of Beltrami County Officials</p> <p>Wayne Alsop. . . . .Auditor Paul Olstad. . . . .Treasurer Bea Haley. . . Clerk of Court John Cahill. . . . . Sheriff Martin Sathre. . .Register of Deeds</p>	<p><i>Lindmans</i> </p> <hr/> <p>JEWELRY </p> <p>Bemidji, Minnesota</p>
<p> ALWAYS FIRST QUALITY!</p> <p>Bemidji, Minnesota</p>	<p>BEMIDJI CLINIC</p> <p>Bemidji, Minnesota</p>	<p>Congratulations to the Seniors Of Blackduck High School</p> <p>from THE NORTHERN NATIONAL BANK Bemidji, Minnesota</p>
<p>REUTER FURNITURE MART</p> <p></p> <p>Bemidji, Minnesota</p>	<p>WESTERN OIL &amp; FUEL CO.</p> <p>PL 1-4411 Bemidji, Minnesota Hugh McCormick, Mgr.</p>	<p> CORPORATION</p> <p>Bemidji, Minnesota</p>
<p>BEMIDJI DENTAL STUDY CLUB</p>	<p>Congratulations from Beltrami County's Oldest and Largest Bank</p> <p>FIRST NATIONAL BANK</p> <p>Bemidji, Minnesota</p>	<p></p> <p>B E M I D J I</p>
<p>JENSEN FABRICS</p> <p>Finest sewing fabrics and custom draperies.</p> <p>PL 1-5793 Bemidji, Minnesota</p>	<p>POISE 'n' IVY</p> <p>Bemidji's Newest Men's Store</p> <p>PL 1-3936 In the Elks Building</p>	<p>J. E. SCHRAEDER CO.</p> <p>Automotive Parts and Supplies</p> <p>308 Third Street Bemidji, Minnesota Phone 751-4649</p>
<p><b>HEY CULLIGAN MAN!</b></p> <p>CULLIGAN SOFT WATER SERVICE</p> <p>Bill Bender Bemidji, Minnesota</p>	<p><u>BLACKDUCK CONTRIBUTORS</u></p> <p>Magnuson Motors Coast-to-Coast T. A. Cross and Sons Gerstad Cash Supply Dr. H. A. Palmer</p>	<p><u>SQUAW LAKE CONTRIBUTORS</u></p> <p>Happ and Jack Schott The Harbor Saku's Service Century Club Leino's Grocery</p>

BEMIDJI CONTRIBUTORS

Barthelemy Furrier  
Cal Hegstrom Company  
Bemidji Bootery  
Ken K. Thompson Jewelers  
Leonard Dickinson  
Dr. L. R. Russ, Chiropractor  
Cann and Schmidt, Lawyers  
Lund and Kroll Sporting Goods  
Bemidji Hardware  
Bemidji Savings and Loan  
Dr. Dick Edwards, Optometrist  
Bemidji Laundry and Cleaning Company  
Markham Hotel

Patterson's Men's and Boy's Wear  
Brent's Music Center  
Northern Farm and Garden  
Bemidji Candy Company  
Frances Allen Flowers  
Dr. LeRoy Hill, Optometrist  
Western Auto  
Sears Roebuck and Company  
Haukness Shop  
Anonymous

TENSTRIKE CONTRIBUTORS

Bess' Dinner Club

# ACKNOWLEDGMENT

The annual staff would like to thank all the people who made the BLACK QUILL of 1963 possible. We would especially like to thank Mrs. Gilstad for her guidance, Mr. Cooper for his photography, and the businessmen who helped us financially. To these and many others we sincerely say. . . . Thank you.

*Carla Rudquist*

*Kathy Shingler*

*Donna Rose*

*Melba Brightley Terry*

*Costello*

*Reynold Gustafson*

*Tom Mendick*

*Alice Swedberg*

*Eileen Beece*

*Phyllis Evans*

*Karen Kupcho*

*Karen Nelson*

*Lupia Strong*

*Sue Niskanen*

*Dennis Guelson*

*Mary Wahnstaffe*

*Becky Graham*

*Wayne Beck*

*Alvin Boyd*

*Lois E. Prosser*

*Pat Matheny*



